

J. H. FLETCHER & CO. Box 2187 – Huntington, WV 25722-2187 – 304/525-7811 – FAX 304/525-4025

IMPORTANT SAFETY NOTICE

INFORMATION BULLETIN NO. 91

TO: OWNERS OF JHF MACHINES MODEL: ARR-D, SERIAL NOS. 2001002, 2002018, 2002026

FROM: J.H. FLETCHER & CO.

DATE: FEBRUARY 2003

SUBJECT: SOLENOID OPERATED CONTROL VALVE

J.H. Fletcher & Co. has identified a potential safety problem on the equipment identified above. These machines are equipped with 4-way, 3-position solenoid operated control valves. On these valves is a manual override button that, when manually activated, can result in inadvertent start-up of functions. If an employee is in the area when these overrides are activated, a serious or fatal "caught-between" or "struck-by" injury is possible.

To prevent this from happening, all personnel must be instructed to stay clear of the potential operating paths of all functions operated by solenoid valves. If manual controls are to be operated, they are to be activated during maintenance procedures only. The machine must be locked out/tagged out, thereby preventing inadvertent activation.

In order to make the most frequent users (operators/maintenance personnel) of these machines more aware of this hazard, J.H. Fletcher & Co. has developed the attached document. We strongly recommend that you provide all personnel with copies of this document, post the document in a prominent location and place a copy in the operator's manual located on the machine.

J.H. Fletcher & Co. will send you two warning tags next week that should be placed in the operator's deck and as close to the solenoid valves as possible.

If you or any of your personnel have any questions or need field assistance from J.H. Fletcher & Co. concerning this notice, please call David Cooper at 304/525-7811, ext. 240.

To avoid the possibility of severe injury or death, J.H. Fletcher & Co. request that the following information be distributed immediately to all personnel responsible for operating, maintaining, servicing or troubleshooting the Fletcher roof drill.



DANGER

POSSIBILITY OF SERIOUS OR FATAL CAUGHT-BETWEEN OR STRUCK BY INJURY CAN OCCUR FROM INCORRECT USE OF THE SOLENOID VALVE OVERRIDE FUNCTION.

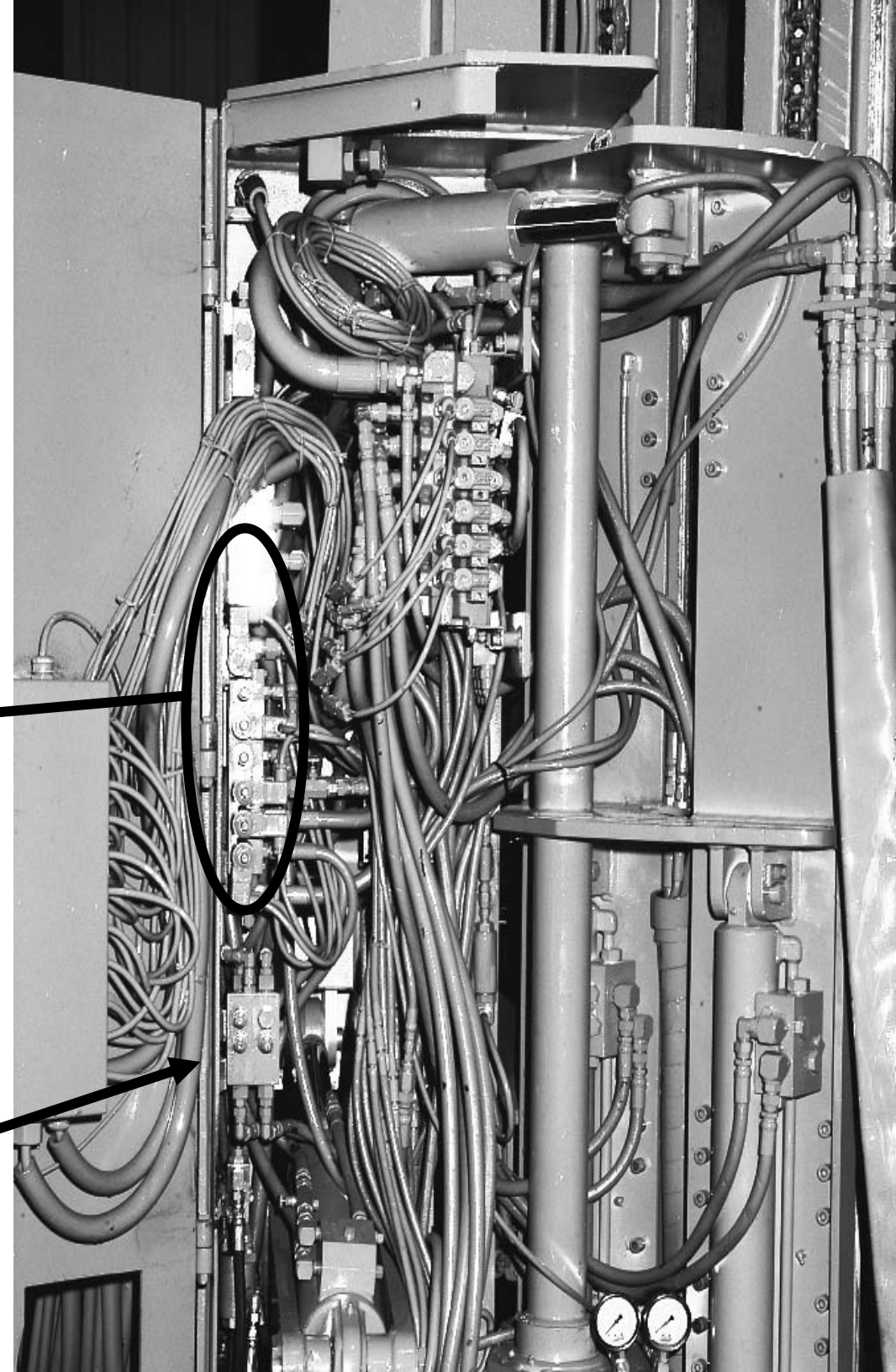
BEFORE ATTEMPTING TO UTILIZE THE SOLENOID VALVE OVERRIDE FUNCTION(S) MAKE SURE YOU ARE CLEAR OF THE POTENTIAL OPERATING PATHS OF ALL FUNCTIONS OPERATED BY SOLENOID VALVES.

NEVER ATTEMPT TO USE THE SOLENOID OVERRIDE FUNCTION(S) UNLESS YOU HAVE BEEN PROPERLY TRAINED AND INSTRUCTED IN THEIR USE.

The MAST INDEX, DRILL/PLATFORM PITCH, MAST TILT, RESIN ARM, BOLT GUIDE and DRILL GUIDE functions are operated by means of solenoid operated control valves. These solenoid operated control valves are located in the valve house which is located on the front of the drill boom (see photo).

SOLENOID OPERATED
CONTROL VALVES

VALVE HOUSE
LOCATED ON FRONT OF DRILL
BOOM



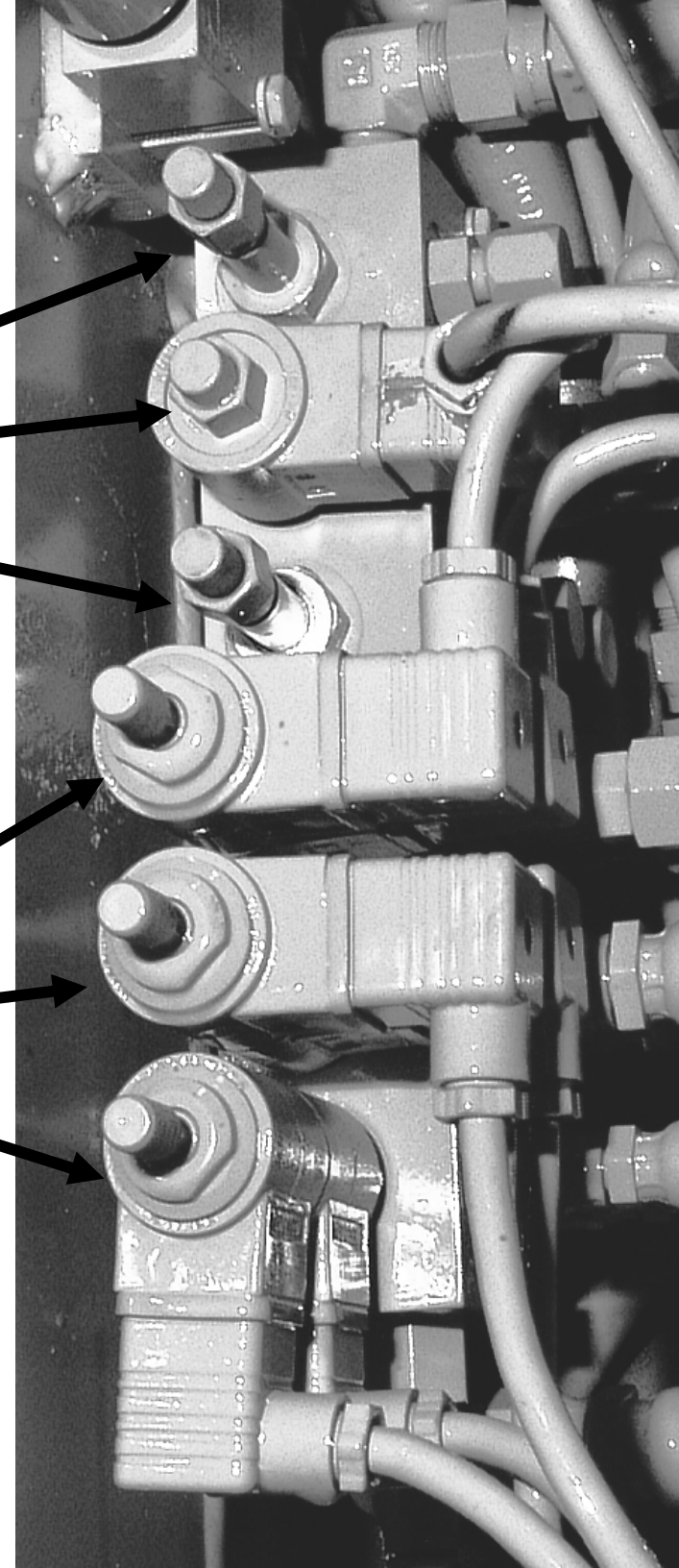
Two types of solenoid operated valves are used: 4-way, 2-position and 4-way, 3-position.

Each of these solenoid operated valves is equipped with a manual override. The operation of the override differs between the two types of valves.

4-WAY, 2 POSITION
SOLENOID OPERATED CONTROL VALVES

NOTE: ALTHOUGH THERE ARE THREE VALVE LOCATIONS, SOME MACHINES MAY BE EQUIPPED WITH ONLY ONE OR TWO SOLENOID COILS. HOWEVER, THE VALVE STEM IS STILL PRESENT WITH AN OVERRIDE BUTTON.

4-WAY, 2 POSITION
SOLENOID OPERATED CONTROL VALVES



4-WAY, 2 POSITION SOLENOID OPERATED CONTROL VALVE

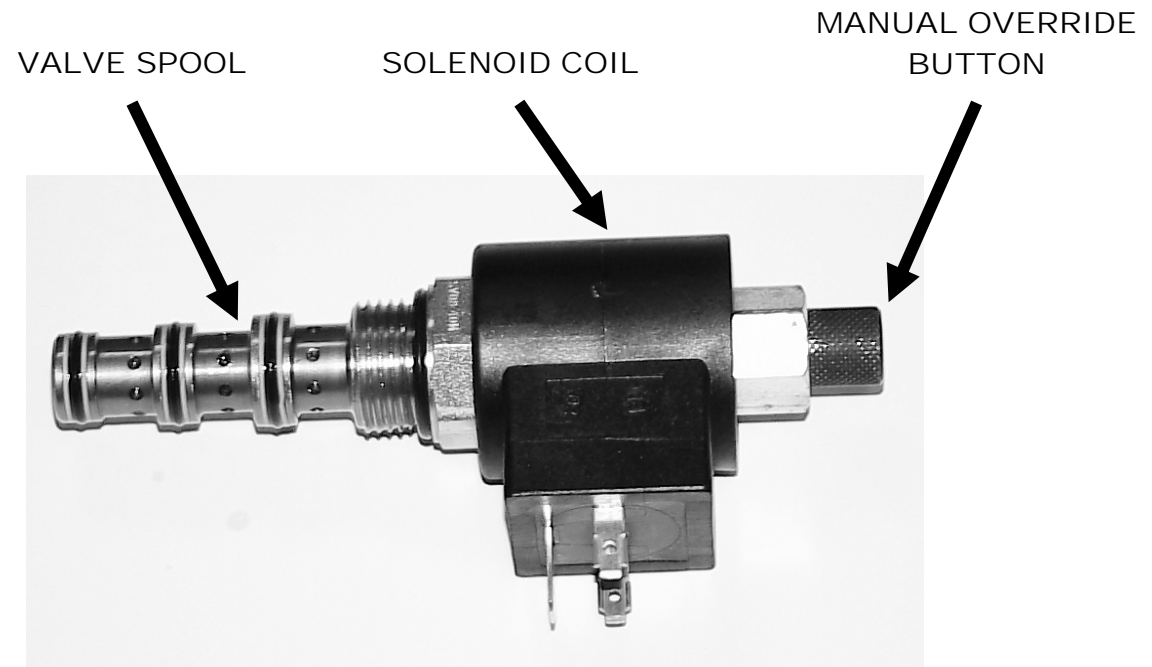
IB91

DANGER

POSSIBILITY OF SERIOUS OR FATAL CAUGHT-BETWEEN OR STRUCK BY INJURY CAN OCCUR FROM INCORRECT USE OF THE SOLENOID VALVE OVERRIDE FUNCTION.

BEFORE ATTEMPTING TO UTILIZE THE SOLENOID VALVE OVERRIDE FUNCTION(S) MAKE SURE YOU ARE CLEAR OF THE POTENTIAL OPERATING PATHS OF ALL FUNCTIONS OPERATED BY SOLENOID VALVES.

NEVER ATTEMPT TO USE THE SOLENOID OVERRIDE FUNCTION(S) UNLESS YOU HAVE BEEN PROPERLY TRAINED AND INSTRUCTED IN THEIR USE.



Operation of Manual Override

To override, push button in and twist counter-clockwise 180 degrees. The internal spring will push the button out. In this position, the valve may be only partially shifted. To assure full override shift, pull the button out to its fullest extension and hold it in this position.

To return to normal valve function, push button in, twist clockwise 90 degrees, and release. Override will be detented in this position.