

Inside

Page 2

*Maintenance
Training*

*Environmental
Control*

Page 3

Scaling Vehicles

*Improved Pick
Housing*

Page 4

Repair or Replace

OEM Trained

The Fletcher Product Newsletters are available online at www.jhfletcher.com. You can download from there or subscribe to receive the newsletter by e-mail.

Mining Machines for Small Spaces

In the year that has passed since the last review of equipment designed specifically for narrow-vein mining environments, it has become clear that there is strong demand from the industry world-wide for these machines. True, lower commodity prices—especially for gold—have hit producers where it hurts, and this has particularly been the case for companies that work higher-cost narrow-vein operations.

Yet conversely, this is precisely the rationale for Fletcher to develop a machine that answers the needs of narrow-vein deposits, by providing mechanization that helps to improve productivity and reduce the physicality of drilling and mucking in tight spaces.

Fletcher Vice President of Sales, Ben Hardman says “Our aim is to help operators that are using jackleg drills for installing roof support to mechanize—to get rid of as much of the ‘grunt’ work as possible.” Hardman added,

“It’s a two pronged approach: making working conditions safer for the mining workforce, and getting better productivity by using specialist machines.”



Fletcher N3114 AD/E



Machines designed for use in headings from 2.4-m (8 ft) wide are now in operation in a Western U.S. mine. Other machines of this same design are installing side support in narrow headings and stopes in steeply dipping formations. With center articulation, the machine can negotiate turns with as little as 2.5 m (8 ft. 3 in.) inside radius, while the drill unit can reach to a top height of 4.4 m (14 ft. 6 in.), eliminating the need for stope backfilling before roof support can be installed.

The operator can control drilling and bolt installation from the basket, while canopies provide additional protection to the operator in both driving and basket-work positions.

If this machine would be useful in your application, please contact Ben Hardman or Billy Goad at Fletcher.

Maintenance Training

Fletcher can provide machine specific maintenance training classes for your company's maintenance personnel. The Fletcher training department has been develop-



ing maintenance training presentation templates specific to the different types of Fletcher machine models. The Maintenance Training Presentation (MTP) can also be customized to a specific machine for a more in-depth approach to the machine's circuits and systems (this training requires advanced notice so the machine can be followed through production).

Classes are normally set up for 8 hours but can be

modified to fit a customer's training schedule.

Typical class content includes:

1. Safety tips for maintenance personnel pertaining to a specific Fletcher model of machine.
2. Chassis and boom hydraulic circuits and systems concentrating on hydraulic pump flow paths and machine hydraulic circuit breakdowns.
3. Electrical circuits and systems covering machine's control circuits for stop/start, low oil warning and shutdown, and remote control system if equipped.
4. Dust suppression system including maintaining a dust system.
5. Routine service and maintenance.
6. Lubrication.
7. Machine setup and adjustments.

For further information on developing a maintenance training presentation class on your machine contact:

Risk Management Department
J. H. Fletcher & Co.
304-525-7811 ext. 240

Maintaining In-Cab Environmental Control

Many of the cabs on Fletcher Roof Bolters, Drill Jumbos and Scalers have an environmental control system that consists of an air conditioner, an air pre-filter and a HEPA filter. These items must be checked and maintained to continue working efficiently.

The air conditioner will not operate properly unless there is good air flow through the condenser coil. This coil is located on the outside of the operator cab where it is subject to being clogged by the dust created during drilling; therefore frequent cleaning is required. It is recommended that this coil be cleaned after every 40 hours of machine operation. However, any time the air conditioner fails to provide adequate cooling, is a good indication that the condenser coil needs to be cleaned.

To clean use compressed air, pressure washer, or steam



Condenser Coil



HEPA Filter



Pre-Filter

cleaner. When cleaning be careful not to bend the fins on the condenser coil. Bent fins will decrease the efficiency of the condenser coil.

The HEPA filter and Pre-Filter keep the air in the cab clean and free of harmful particulates and should be replaced after every 250 hours of machine operation. Check your parts book and service manual for instructions on ordering and installing new filters.

Scaling Vehicles

Fletcher Scalers are used to remove loose material from the mine roof and walls. The removal of loose rock increases mine safety by decreasing the chance of rock and roof falls, making the area safer for workers. Operators are protected during operation by either a canopy or cab. Rugged cabs with rock guards that exceed FOPS standards are ergonomically designed for comfort, control and visibility.



Fletcher scalers are available for a wide range of applications, including, but not limited to: limestone, salt, granite, copper, silver, and gold mines. Fletcher designs scalers for heights and tight quarters, along with other specific needs. Fletcher's scaling line ranges from vehicles built for limited spaces, operating in a working height of 7', up to a high reach scaling vehicle, working in heights of up to 50'. Models are available with an articulating boom,

allowing up to 360° upper chassis swing. Models are also available with an articulating carrier allowing precise pick positioning and speed. Fletcher scaling vehicles provide the option of a crawler or tire driven carrier. All models are available with picks, hydraulic breakers or cutter drums. Other uses for scaling vehicles include seal cutting and floor bump removal. Fletcher's line of scaling vehicles includes a double-knuckle boom scaler, designed specifically for floor bump removal, but also allowing

the ability to scale both roof and walls.

Currently, Fletcher's main scaling vehicle markets range from the Eastern states down to the Gulf states, and into the Midwest. Fletcher scalers have also found to be favourable in the Canadian market.

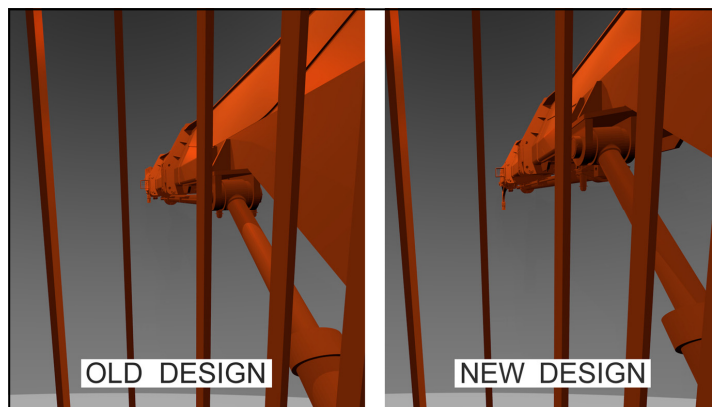
Fletcher supplies both standard scaling equipment and also equipment customized specifically to conditions and applications of a customer's mine or pit highwall.

Improved Pick Housing for 4250 Scaler

Just one of a number of improvements for the Fletcher 4250-RD scalers is a newly-designed scaler pick and housing assembly.

The new pick design offers greater operator visibility and an aggressive profile for more efficient scaling. The narrow design of the new pick not only aids in allowing the operator to have a better view of the scaling tooth, but also results in less

wear to the pick. In addition to the pick change, the pick housing has also experienced a dramatic design change. The pick housing has changed from the old upward angled design to a straight housing, resulting in less "blind scaling". With this new design, the operator can see the pick through a greater range of its motion than on previ-

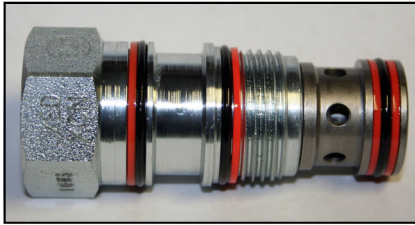


ous designs. Another improvement in the pick housing involves a structural change in how the pick housing attaches to the end of the scaling boom. The 2-pin connection at the back of the pick housing has been replaced by a more robust, bolt-on connection that attaches directly to the bolt circle of the rotation bearing on the end of the boom. The pick pivot pin connection has also been improved. Where the pick mounts to the pick

housing, the pivot pin connection is now sealed from dust and dirt via large dust seals, resulting in less pin and bushing wear. Customers interested in increasing the productivity of their current 4250-RD scaler can purchase kit p/n 522837 to take advantage of these design improvements.

Pilot Check Cartridge: Replace or Repair

Fletcher offers customers numerous repair kits for its products and their components. Recently, the company began reviewing the advantages of repairing certain items versus total replace-



ment. The 31577 pilot check cartridge falls into the category of "better to replace than repair" so a repair kit will no longer be available. It is quicker, reduces down time, and improves service life when the cartridge is just replaced.

Please make a note in your parts books that this cartridge should be replaced, not repaired.

OEM Trained Service Technicians

We at Fletcher have OEM trained service technicians for all your needs. The technicians are Fluid Power Certified through the IFPS (International Fluid Power Society). Not only are our technicians on call for your Fletcher equipment we also offer competitive service packages for all your needs from interval service to technicians being at your location daily. The service packages can be adjusted per customer needs. Call Frank Fetty at 304-525-7811, Ext. 263, to discuss your service needs.

Information on job opportunities and how to apply can be found on our website: www.jhfletcher.com
(AA/EEO Employer)

J. H. Fletcher & Co. on the Web:
www.jhfletcher.com
Now Available On Line:
Literature, Newsletters, Bulletins, Published Papers

The information contained in this newsletter has been obtained from sources believed to be reliable, and the editors have exercised reasonable care to assure its accuracy. However, J. H. Fletcher & Co. does not guarantee that contents of this publication are correct and statements attributed to other sources do not necessarily reflect the opinion or position of J. H. Fletcher & Co.

Published by J. H. Fletcher & Co.
Box 2187
Huntington, WV 25722-2187
© 2014

Currently we are only sending the Fletcher Newsletter to a select readership. If you know of someone in your company who wishes to be placed on our mailing, please let us know. Below is a form for a free subscription to the newsletter. Just fill out the form and return it to J. H. Fletcher & Co., Risk Management, Box 2187, Huntington WV 25722-2187.

FREE SUBSCRIPTION FORM

Name _____ Job Title _____
Company _____ Address _____
City _____ State _____ Zip _____
Phone _____ Email _____

J. H. Fletcher & Co.

Box 2187

Huntington, WV 25722-2187