

Inside

Page 2

Improved Dust Tanks

Accumulators

Page 3

Information Bulletin 124

Valve Section Caps

Posters

Page 4

In Memory

Mining Machines for Small Spaces

In the year that has passed since the last review of equipment designed specifically for narrow-vein mining environments, it has become clear that there is strong demand from the industry worldwide for these machines. True, lower commodity prices, especially for gold, have hit producers where it hurts, and this has particularly been the case for companies that work higher-cost narrow-vein operations.

Yet conversely, this is precisely the rationale for Fletcher to develop a machine that answers the needs of narrow-vein deposits by providing mechanization that helps to improve productivity and reduce the physicality of drilling and mucking in tight spaces.

Fletcher Vice President of Sales, Ben Hardman says “Our aim is to help operators that are using jackleg drills for installing roof support to mechanize—to get rid of as much of the ‘grunt’ work as possible.” Hardman added, “It’s a two pronged approach: making

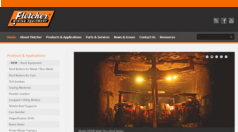
working conditions safer for the mining workforce, and getting better productivity by using specialized machines.”

Machines designed for use in headings from 2.4-m (8 ft) wide are now in operation in a Western U.S. mine. Other machines of this same design are installing side support in narrow headings and stopes in steeply dipping formations. With center articulation, the machine can negotiate turns with as little as 2.5 m (8 ft. 3 in.) inside radius, while the drill unit can reach to a top height of 4.4 m (14 ft. 6 in.), eliminating the need for stope backfilling before roof support can be installed.

The operator can control drilling and bolt installation from the basket, while canopies provide additional protection to the operator in both driving and basket-work positions.

If this machine would be useful in your application, please contact Ben Hardman or Billy Goad at Fletcher.

Fletcher N3114 AD/E



Check for regular updates, news, and downloads on our website at www.jhfletcher.com

Remember to vote in November, give mining your support.

Improved Dust Tanks

Fletcher® has recently received MSHA approval to modify and improve our standard dust tanks. First, to eliminate dead air space, the double wall cavity



behind the cartridge filter has been removed and replaced with a smooth transitional single piece air passage. Second, to reduce maintenance and the number of parts, the rubber latches have been replaced with steel pins. The hinges have been designed so the door can be hinged either left or right with a simple change.

To prevent confusion we have given the improved dust tanks a distinct part number for tracking purposes but your dust approval will not be affected by the



change.

If you would like to discuss replacing or finding out if your dust tanks can be converted to the updated design please contact your nearest Fletcher authorized representative.



Accumulators

Accumulators are used at different locations on J.H. Fletcher & Co. equipment. The manufacturers of this component provide different information on the care and use of accumulators. Improper use and care of accumulators can lead to serious injury or death.



To prevent injury, J.H. Fletcher & Co. recommends the following:



- *Ensure that your employees follow the manufacturer's recommendations and confirm all pressure is released prior to performing any maintenance work. Trapped pressure is released by cycling the valve handle back and forth with the machine off.
- *Train employees to recognize the hazards of stored energy.
- *Tell employees to stop work if accumulator is not functioning properly.
- *Never weld on or near an accumulator.
- *Ensure all warning labels remain visible while removing caps.

*If accumulators need to be charged, J.H. Fletcher & Co. has an accumulator Test Apparatus Kit (Part number: 139014). Please see our web site at www.jhfletcher.com for additional information regarding accumulators.

Information Bulletin 124

J.H. Fletcher & Co. (“Fletcher”) has recently been notified that some machine owners are removing the tram canopy from roof drills. Use of a roof drill without the manufacturer specified tram canopy may result in an unintentional operator contact with rock, roof material, debris, a tool or foreign object and could result in the inadvertent activation of a control lever. Fletcher has developed a guard for the tram deck located at the auxiliary control lever (see picture). You may order the guard free from Fletcher.

Information Bulletin No. 124, is now available on the Fletcher website and describes the guard, its importance, and how to order.



Valve Section Caps

A commercial valve section (VA-20) has a cap that keeps the spool inside the valve section. The part number for this cap was originally (JHF): 23479 and was replaced several years after that to a (JHF): 31002. The cap acts as a retainer for the spool, spring (specific to Fletcher valves) and gasket. This cap stops the spool from coming out of the valve chest, creating a spring return control. If the valve is sticking the cap may be loose. Fletcher recommends that you:

1. Regularly inspect the cap and make sure it is not loose, cracked (normally around screw hole) or damaged.
2. Make sure all caps are tight on the valve spool. Should be torqued to 34 +/- 2 in-lbs.
3. When installing a replacement cap use Loctite 262 (Red) or equivalent and use only the specified screws to hold the cap in place (JHF part number 23479).
4. Always check your handle direction sheet when replacing a valve. The handle directions sheet (see operator’s manual) will provide you information on what direction the valve will work before placing the valve back into service.

If you have any questions, about valve sections or control valve direction, please contact J.H. Fletcher & Co.



Posters

A new safety poster is available from Fletcher to remind roof bolter operators of possible rotation hazards present when drilling or installing bolts and how to avoid those hazards. The poster (part no. 543865) may be ordered directly from the company website or by calling the Risk Management Department (304-525-7811, ext. 241).

! DANGER

MOVING PARTS CAN CRUSH AND CUT

DIFFERENT HAZARDS MAY EXIST DUE TO ROTATION. HAZARDS MAY INCLUDE:

DANGER

HANDS OFF

DANGER

TOO MUCH PRESSURE WILL BREAK STEEL

DANGER

KEEP HANDS AWAY FROM HANGING STEEL

DANGER

HIGH POINT BETWEEN STEEL COUPLINGS

DANGER

TOO MUCH PRESSURE WILL BREAK STEEL

DANGER

STOP ROTATION BEFORE ENTERING HOLE

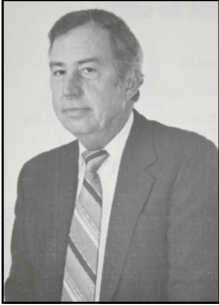
FOLLOW FLETCHER’S FIVE SIMPLE RULES DURING DRILLING (SEE BULLETIN 122).

1. DON'T ROTATE A DRILL STEEL OR BOLT AT A SPEED BEYOND ITS FAILURE LIMIT.
2. DON'T ROTATE A LONG, UNRESTRAINED DRILL STEEL OR ROOF BOLT.
3. DON'T ROTATE A COUPLED DRILL STEEL STRING AT FULL ROTATION SPEED UNLESS THE COUPLING IS IN THE HOLE.
4. DON'T ROTATE THE DRILL HEAD UNLESS BOTH HANDS ARE A SAFE DISTANCE AWAY.
5. DON'T ROTATE A DRILL STEEL OR BOLT WHILE FEEDING BEYOND ITS FAILURE LIMIT.

NEVER EXPOSE YOURSELF TO ROOF BOLTING RISKS THAT WILL RESULT IN SERIOUS INJURY OR DEATH.

Fletcher PART NO. 543865

In Memory



In 2012, former J. H. Fletcher & Co. Service Department Manager Bill Goad passed away. Bill started with J. H. Fletcher & Co. after graduating from Marshall University in 1961 and retired in 1998. Those who worked under Bill's leadership felt that he treated them very well and was respected by the employees in his department. Bill always had the best interest of the customer in mind and was an important part of the growth of J. H. Fletcher & Co.

Bill's wife, Patricia, passed away this past July. Bill and Patricia's son, Billy, is the Business Development Manager for J. H. Fletcher & Co.



This past July, friends and family members said goodbye to Larry Stull. Larry joined J. H. Fletcher & Co. in 1971 and retired in 1990 as Sales Manager for the Northern West Virginia, Pennsylvania and Ohio District.

Larry resided in Carmichaels, PA and was well known and respected in the mining industry.

Larry was a NASCAR fan and in his later years learned to play the organ. Larry was 88 years old at his passing.

Information on job opportunities and how to apply can be found on our website: www.jhfletcher.com
(AA/EEO Employer)

J. H. Fletcher & Co. on the Web:
www.jhfletcher.com
Now Available On Line:
Literature, Newsletters, Bulletins, Published Papers

The information contained in this newsletter has been obtained from sources believed to be reliable, and the editors have exercised reasonable care to assure its accuracy. However, J. H. Fletcher & Co. does not guarantee that contents of this publication are correct and statements attributed to other sources do not necessarily reflect the opinion or position of J. H. Fletcher & Co.

Published by J. H. Fletcher & Co.
Box 2187
Huntington, WV 25722-2187
© 2014

If you know of someone who would like to receive our newsletter, please let us know by filling out the form below and return it to J. H. Fletcher & Co., Risk Management, Box 2187, Huntington WV 25722-2187. If you prefer to have the newsletter emailed to you then circle your email address.

FREE SUBSCRIPTION FORM

Name _____ Job Title _____

Company _____ Address _____

City _____ State _____ Zip _____

Phone _____ Email _____

J. H. Fletcher & Co.

Box 2187

Huntington, WV 25722-2187