

SHOWN w/ OUTRIGGERS  
STAB JACKS OPTIONAL

HYDRAULIC OIL  
TANK (APPROX.  
140 GALLONS)

TWO SPEED  
HYDROSTATIC  
DRIVE GEAR BOX

FUEL TANK  
(APPROX. 40 GAL.)

DUETZ WATER COOLED  
4 CYL. ENGINE BF4M1013C  
154 HP @ 2300 RPM

HEAVY DUTY  
AXLES w/ WET  
DISC BRAKE and  
12.00 x 20 TIRES

BATTERY w/  
BOX and COVER

TYPICAL SCALER ROOF  
COVERAGE IN A 20ft.  
SEAM w/ SCALING HAMMER

HEAVY DUTY  
SCALING BOOM  
7' - 0" EXTENSION

MSHA RATED ENCLOSED CAB  
(18,000 LBS. LOAD)  
FULLY ADJUSTABLE,  
AIR SUSPENSION SEAT

ENGINE AIR  
FILTER

VEHICLE EXHAUST  
GAS PURIFIER and  
FUME DILUTER

MAXIMUM TRAMMING SPEED:  
12 MPH w/33:1 RATIO AXLES AND  
150 HP ENGINE

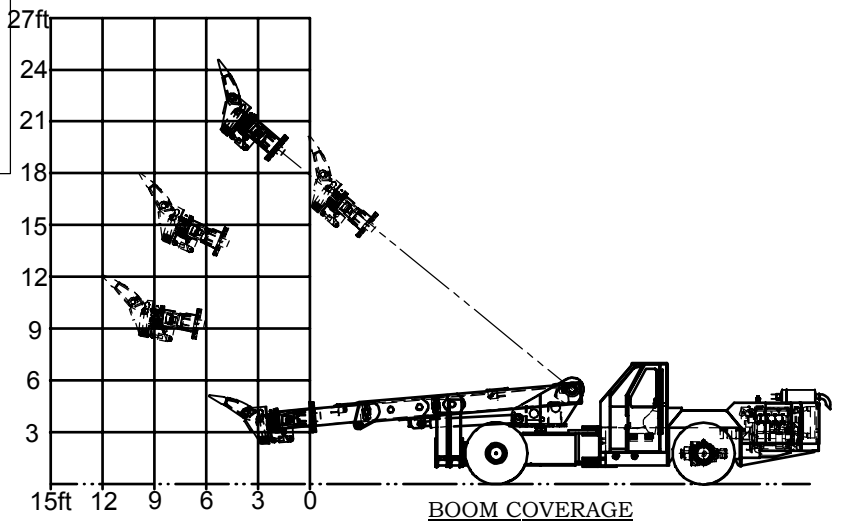
330°  
ROTATION

35'-3" (APPROX. WITH SCALING CLAW) 36' (APPROX. WITH HAMMER)

TURNING ABILITY:  
(IN A 12' x 12' ROADWAY  
WITH 4' x 4' CORNERS  
REMOVED)

OPTIONAL:  
HAMMER TILT  
60 degrees down

GROUND IMPACT @  
BOOM 3 degrees DOWN  
AND RETRACTED



LEVEL	DATE	BY	REVISION
H			
G			
F			
E			
D			
C			
B	09/17/01	WBA	TEXT & DIM WAS CHANGED
A	//00	SEP	RELEASED

DO NOT CHANGE MANUALLY

PART #

DIMENSIONAL TOLERANCES IN INCHES  
UNLESS OTHERWISE SPECIFIED:

BREAK CORNERS  
0.005" - 0.015"

DECIMALS  
0.X +/- 0.01  
0.XXX +/- 0.005

FRACTIONS +/- 1/16" ANGLES +/- 1 DEG.

UNLESS OTHERWISE SPECIFIED ALL STEEL  
SPECIFICATIONS ARE:  
HRS PLATE -- A36  
HRS BAR -- A36 OR 1020  
ALLOY BAR -- 4140/4142 HEAT TREATED

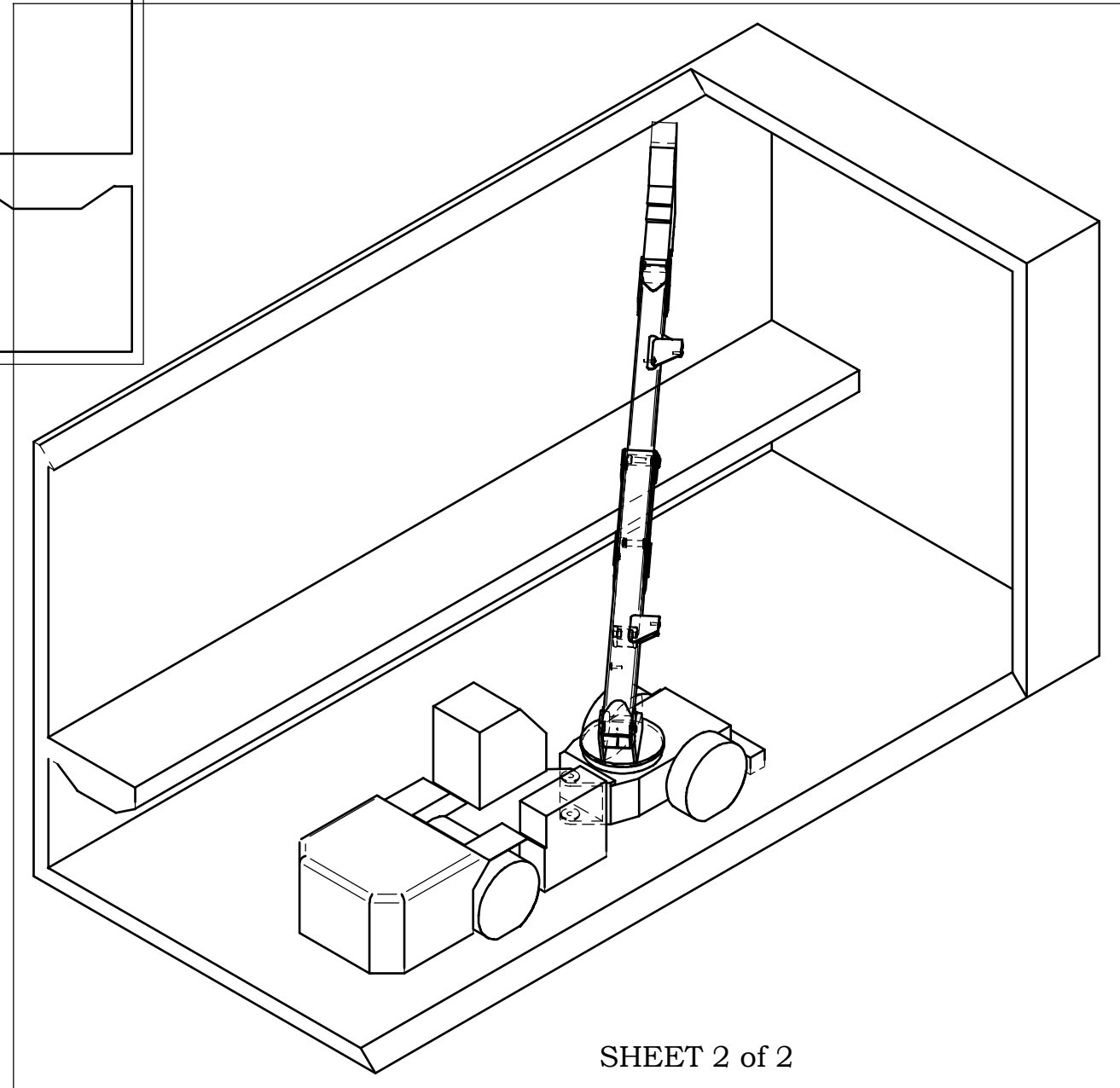
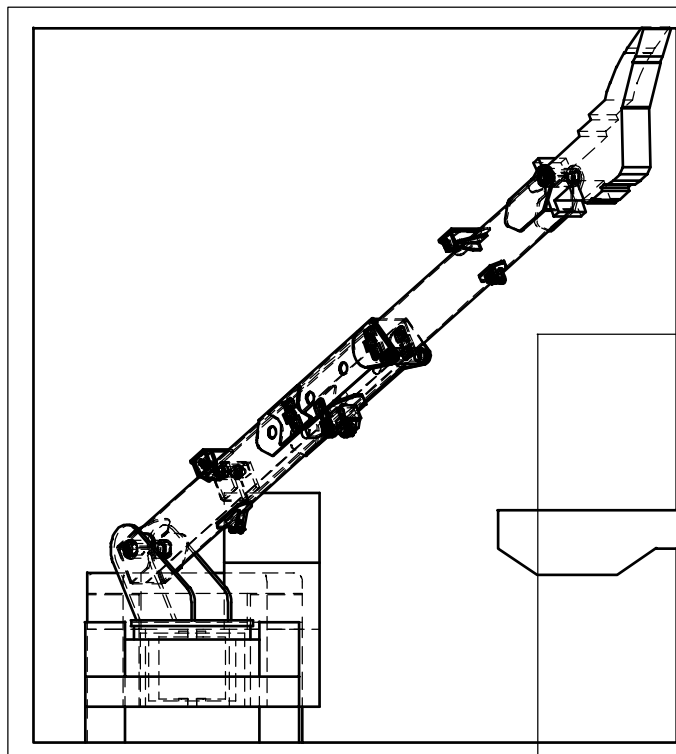
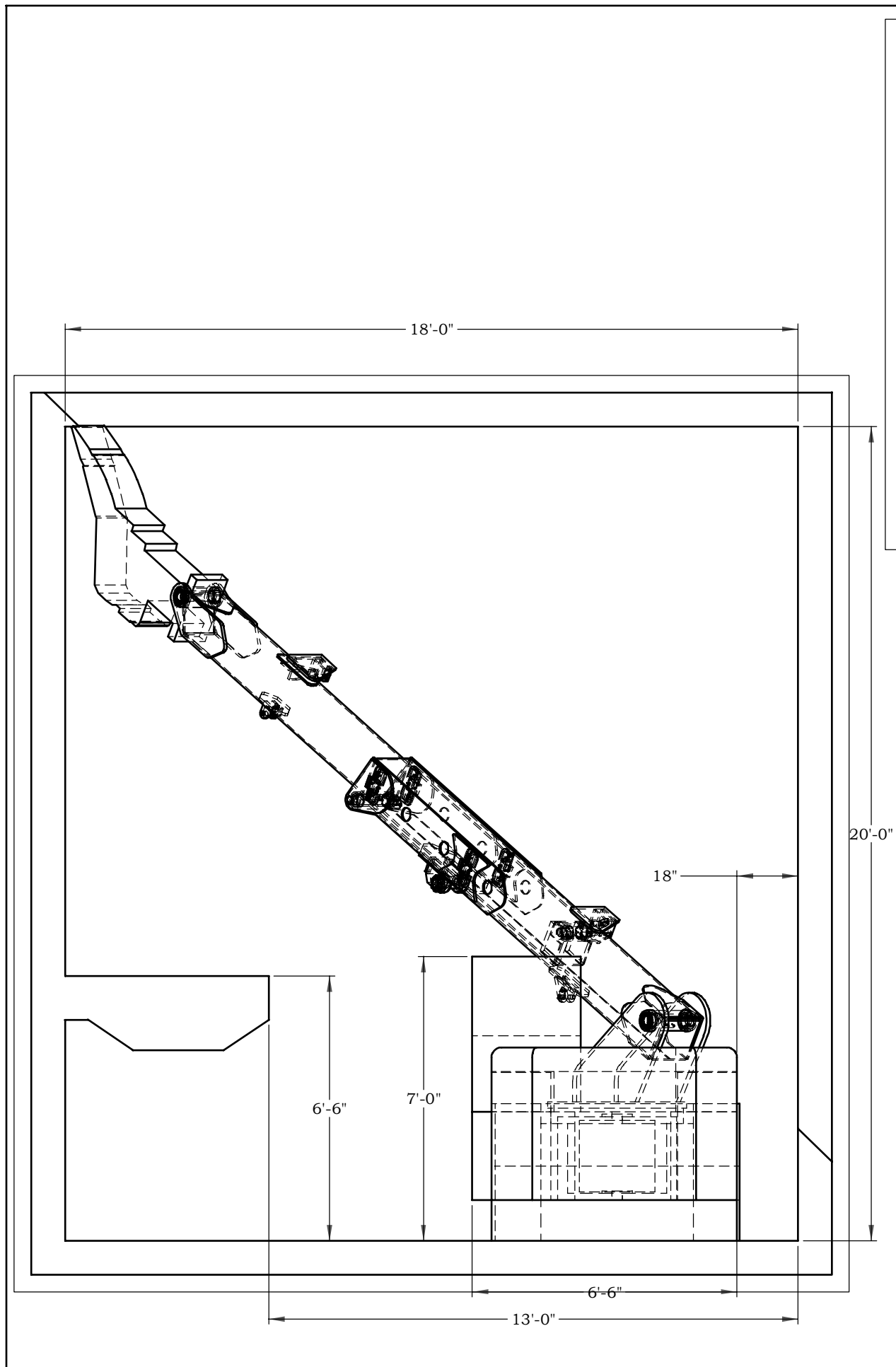
WELDING  
UNLESS SPECIFIED, ALL JOINTS ARE  
CONTINUOUS DOUBLE FILLET WELDS  
AT LEAST HALF THICKNESS OF THE  
THINNEST MEMBER.

**J. H. FLETCHER & CO.**

THIS DRAWING IN DESIGN AND DETAIL IS OUR PROPERTY AND MUST NOT BE USED EXCEPT IN CONNECTION WITH OUR WORK. ALL RIGHTS OF DESIGN OR INVENTION ARE RESERVED.

**DIESEL POWERED, NARROW  
ARTICULATED SCALING VEHICLE  
MODEL SV-4D**

FILENAME .00.XA DATE 09/11/01  
SCALE BY SEP DRAWER 66 DWG 16-17-25  
not to scale



SHEET 2 of 2

H			
G			
F			
E			
D			
C			
B			
A			
LEVEL	DATE	BY	REVISION
DO NOT CHANGE MANUALLY			

DIMENSIONAL TOLERANCES IN INCHES  
UNLESS OTHERWISE SPECIFIED:

BREAK CORNERS  
0.005" - 0.015"

DECIMALS  
0.X +/- 0.01  
0.XXX +/- 0.005

FRACTIONS +/- 1/16" ANGLES +/- 1 DEG.

UNLESS OTHERWISE SPECIFIED ALL STEEL  
SPECIFICATIONS ARE:  
HRS PLATE -- A36  
HRS BAR -- A36 OR 1020  
ALLOY BAR -- 4140/4142 HEAT TREATED

WELDING  
UNLESS SPECIFIED, ALL JOINTS ARE  
CONTINUOUS DOUBLE FILLET WELDS  
AT LEAST HALF THICKNESS OF THE  
THINNEST MEMBER.

**J. H. FLETCHER & CO.®**  
THIS DRAWING IN DESIGN AND DETAIL IS OUR PROPERTY AND MUST NOT BE USED EXCEPT  
IN CONNECTION WITH OUR WORK. ALL RIGHTS OF DESIGN OR INVENTION ARE RESERVED.

**DIESEL POWERED, NARROW  
ARTICULATED SCALING VEHICLE  
MODEL SV-4D**

FILENAME	.00.XA	DATE	09/11/01
SCALE	not to scale	DRAWN BY	SEP 66
		DWG	16-17-25