

FLETCHER[®]

Model LHD



Underground Horizontal Drilling Equipment

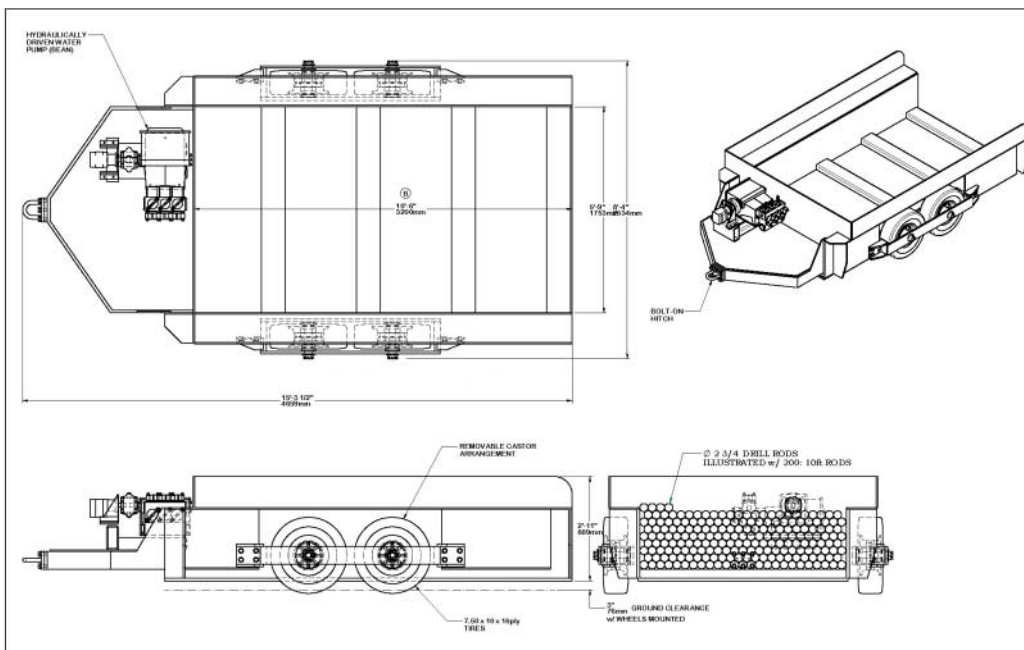
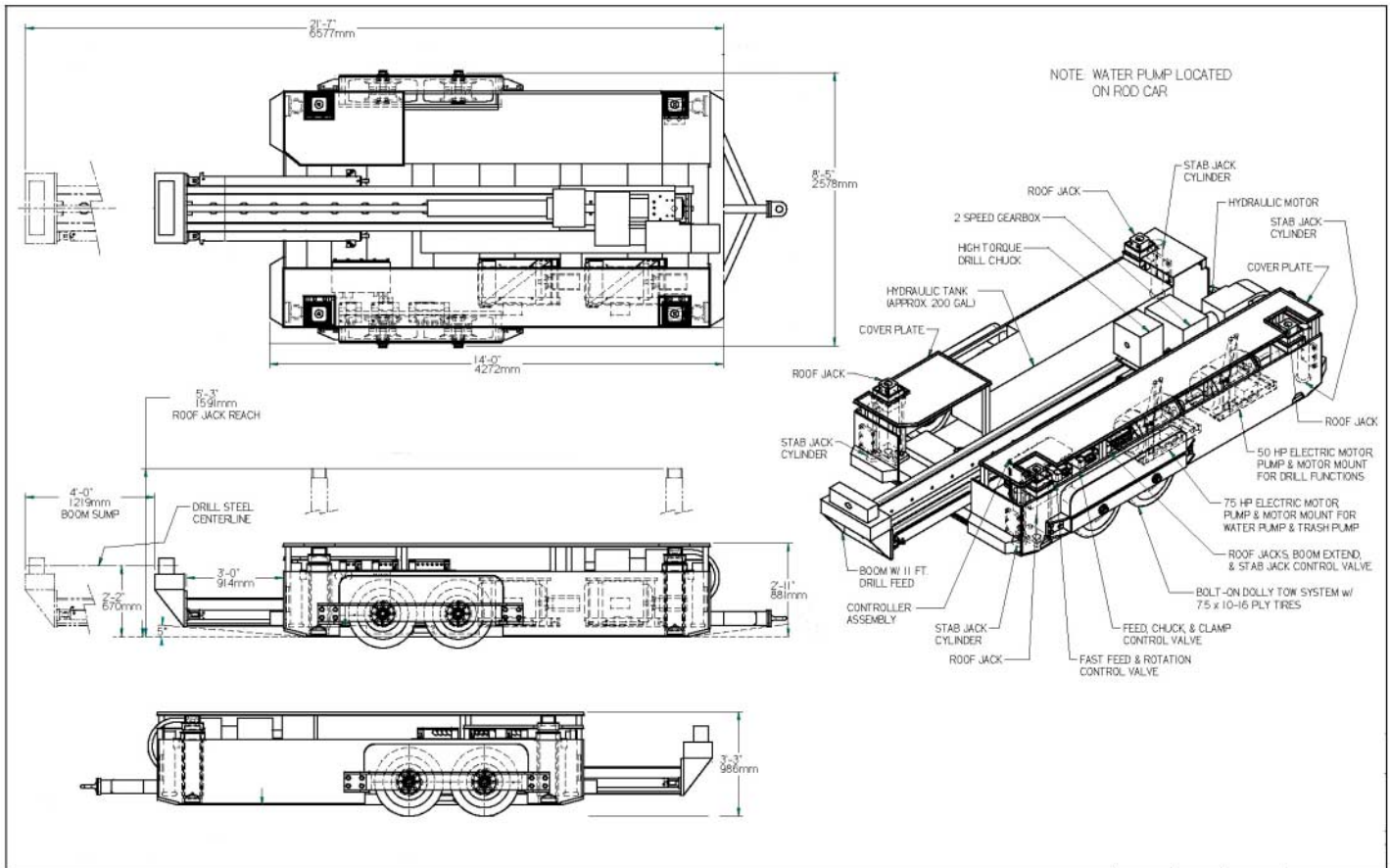
- Rotational torque up to 2500 Ft LBS (3390 N-M)
- Chainless drill feed carriage with thrust up to 50,000 LBS (22.4 kN)
- Hollow shaft drill chucks for EW, NQ, BQ rods
- Straight rotary drill systems
- In hole motor drill systems

Features

- Skid mount, Dolly tow system, Rubber tired or crawler drive undercarriages
- 480 or 575 VAC permissible Electrics
- Load sense hydraulic system



Model LHD



J. H. Fletcher & Co. cannot anticipate every mine hazard that may develop during use of these products. A roof control plan must be approved by MSHA before use of these products begins. Proper use, maintenance and continued use of (OEM) original equipment parts will be essential for maximum operating results.

Specifically engineered for each customer's needs.



J. H. Fletcher & Co.
 P.O. Box 2187
 Huntington, WV 25722-2187
 jhf@jh Fletcher.com
 304-525-7811