

FLETCHER

Model 3800 Series

Diesel Tractor



The Fletcher Model 3800 Series off highway Diesel Tractor is a versatile and reliable towing vehicle with 5th wheel and pintle hook arrangements. Designed to meet specific loads and grades, the tractor features a powerful diesel engine, four wheel drive, and maneuverability of an articulated chassis with Oscillating center joint. The 3800 are not for transporting personnel; however, if you are looking for a solution for transporting materials, supplies, and equipment into the mines efficiently, the 3800 Series Diesel Tractor may be for you.

Meets CFR Part 75.1909 & 75.1910 for Outby Coal Mine Operation

Features

Diesel Power
Four Wheel Drive
Pressurized Enclosed Cab
Powershift Transmission

Power Assisted Brakes
Failsafe Brake on the Driveline
Joystick Steering

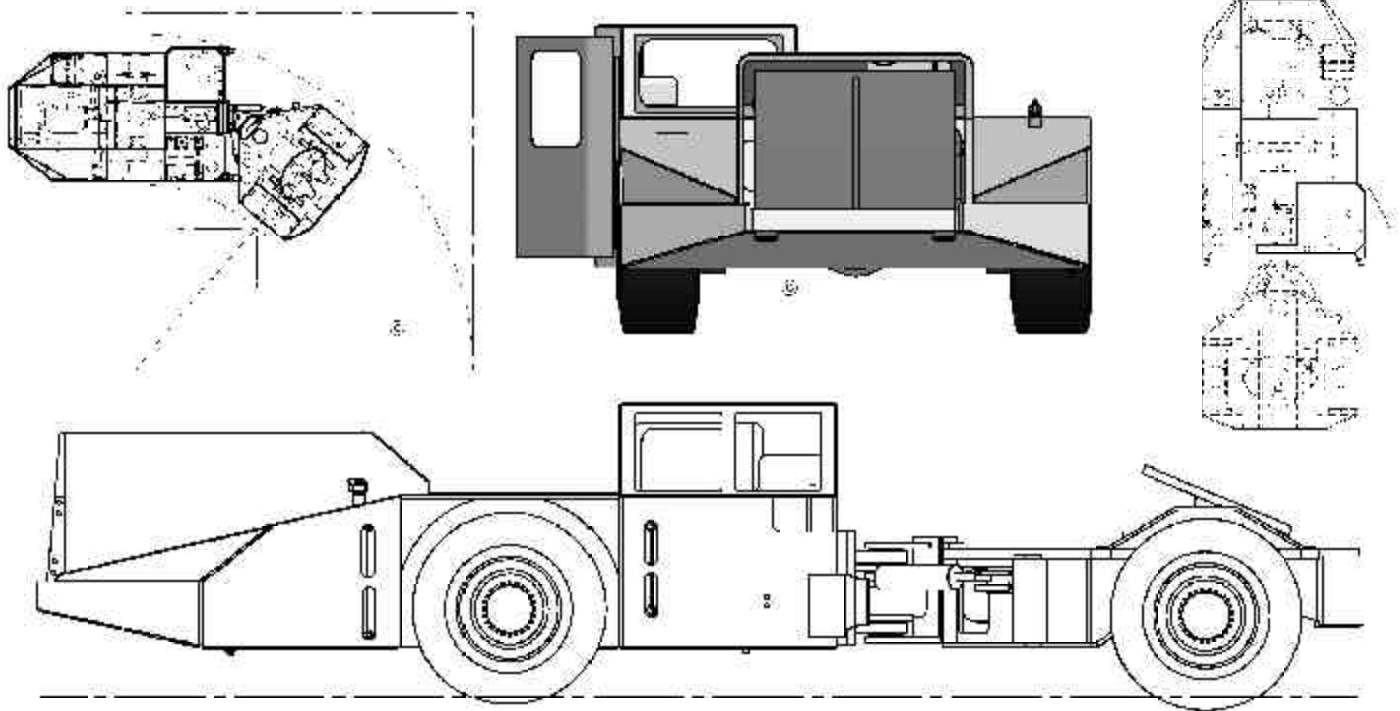


Specifically engineered for each customer's needs.

J. H. Fletcher & Co.
402 High St. P.O. Box 2187
Huntington, WV 25722-2187
jhf@jhletcher.com
304-525-7811

Model 3800 Series

Diesel Tractor



Specifications

Overall Width:	10'	Ground Clearance:	6.5" with 35-15x15 tires
Overall Length:	25'3"	Inside Turning Radius:	13'11"
Overall Height:	46.5"	Outside Turning Radius:	25'



J. H. Fletcher & Co. cannot anticipate every mine hazard that may develop during use of these products. Proper use, maintenance and continued use of (OEM) original equipment parts will be essential for maximum operating results.