

# FLETCHER

## Model HDR

High Seam  
General Purpose Roof Bolter



For use in mines where:

- Overcasts and falls require bolting in heights over 2.5m
- Production needs do not require a dual boom bolter

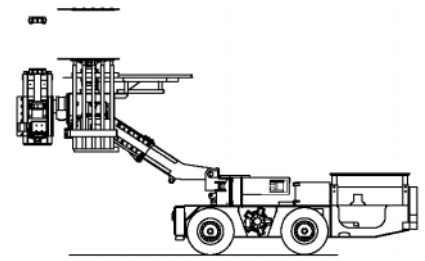
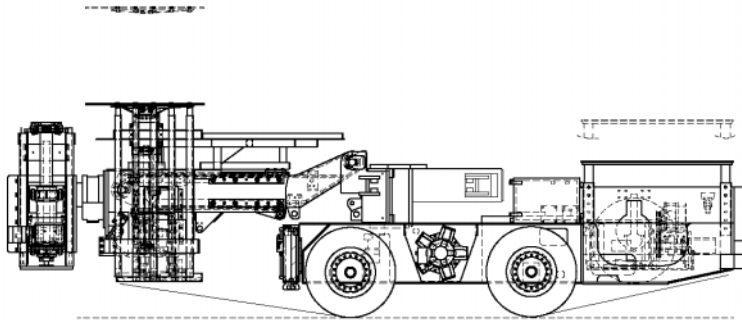
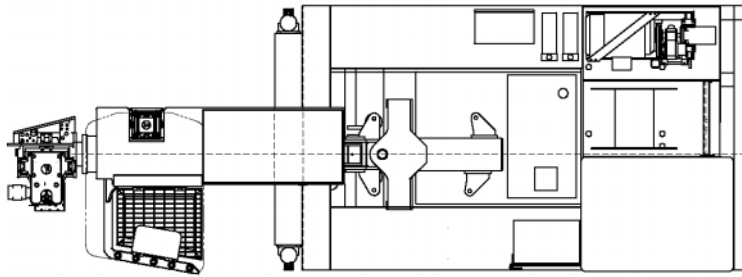
Fletcher Model HDR is a versatile roof drill designed for general purpose bolting in up to 4.5m high roof conditions. The model HDR features an operator platform, therefore rib protection tubes are possible and included. Boom lifts, swings, and extends to allow multiple installations from one chassis position. Heavy-duty Fletcher systems assure long life, maximum reliability and productivity.

## Standard Equipment

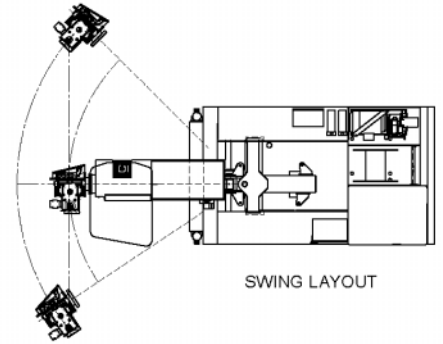
Automatic disc brakes  
Deep chuck drill head  
4 wheel drive - skid axle  
MSHA approved dust collection system  
Fore-aft mast tilt  
Front Outriggers  
Certified drill and tram canopy  
Temporary roof support



# Model HDR



BOOM LIFT LAYOUT



SWING LAYOUT

## General Specifications

Overall Width: 2.4m (8')  
Overall Length: 6.8m (22'5")  
Overall Height: 2.0m (6'6")  
Working Height: up to 4.5m (14'7")  
Ground Clearance: 0.3m (12")

Boom Extend: 9.0m (3')  
Boom Swing: 2.5m (8'2") either side of center  
Boom Lift: Up to 45°

(Dimensions vary, depending on tire size and seam height application)

## Fletcher Options

- mat holder, mesh clamps
- auto dump precleaner
- dust collection bags
- hydraulic driven blower
- hydraulic power take-off
- hydraulic flow meters
- wet drilling system
- rotary impact
- mast tilt

J. H. Fletcher & Co. cannot anticipate every mine hazard that may develop during use of these products. A roof control plan must be approved by MSHA before use of these products begins. Proper use, maintenance and continued use of (OEM) original equipment parts will be essential for maximum operating results.

© 9/2006 J. H. Fletcher & Co.

*Specifically engineered for each customer's needs.*



**J. H. Fletcher & Co.**  
402 High St. P.O. Box 2187  
Huntington, WV 25722-2187  
jhf@jhfletcher.com  
304-525-7811