

## Inside

Page 2

*Modular Start  
Switch*

*Scaling Vehicle*

---

Page 3

*Change to Parts  
Book Sheet*

---

Page 4

*Coal Shows*

*Fletcher Web-Site*

# Fletcher Low Profile Rotary Impact Drillhead

J. H. Fletcher & Co. is now offering a low profile rotary impact drillhead for mines that encounter hard drilling conditions.

Two modes are available on this hydraulically driven drillhead. In one mode the drill operator has the use of full rotary drilling with all of the speed and torque of a Fletcher rotary drillhead. By shifting a diversion valve, the operator can switch to the second mode, rotary-percussive drilling. In this mode the feed pressure is reduced, the rotation speed is slowed down, and the impactor is activated.

The drillhead is available as an option on new arm feed and mast feed roof bolters. Retrofit kits are also being developed to add this feature to arm feed and mast feed machines in the field.

Contact J. H. Fletcher & Co. for more information.



Diversion Valve



Flow control for adjusting drill speed and impactor frequency

# Fletcher Now Using Modular Start Switch System

J. H. Fletcher & Co. is now making use of a modular start switch system. This system is made up of single start switches for the booms and dual switches for the tram decks on dual head machines. A series of cables with screw-on connectors links the start switches together and to the starter box. A single I.S. relay is all that is required in the starter box for this system.

The modular start switch system is easy to install and trouble shoot because of the minimum number of components. Repairs are simple since it is just a matter of unplugging a switch and replacing it with another or replacing a section of cable. Repair of the relay module is accomplished by pulling the bad one out and replacing with a new one.

The modular start switch is just one of the things Fletcher is doing to improve the efficiency of our equipment. If you need more information on this or any other component please contact us at 304-525-7811.



Start Switch  
On Boom



Start Switch In  
Tram Deck

## Fletcher SV

Most of the equipment designed and manufactured by J. H. Fletcher & Co. is for roof **support**. However, there is more to roof control than supporting the roof. Sometimes, in specific environmental conditions, you have to help the roof come down.

Over time, especially in non-coal mining, roof rock material will crack and become loose. This loose material is very hazardous since it could fall and seriously injure someone or even cause death. Therefore, it is necessary to remove this loose material by scaling the roof.

Fletcher has designed Scaling Vehicles which are working successfully in salt, limestone, and other hardrock mining environments. A scaling vehicle can be made to fit your particular needs and

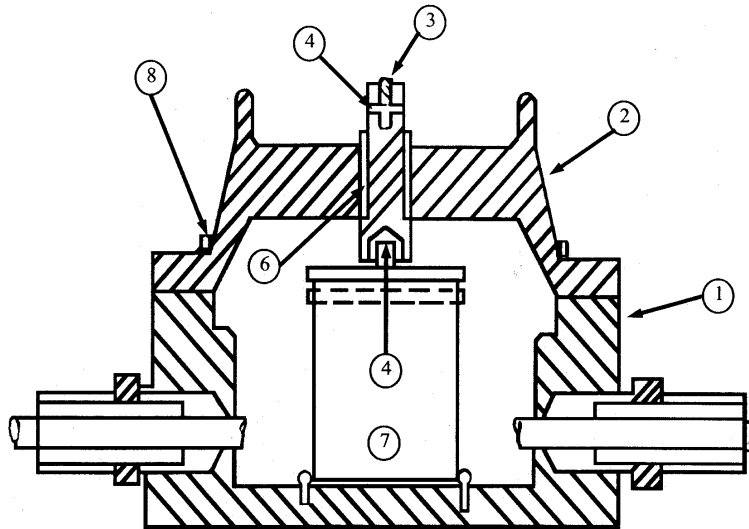
offers options such as a standard pick or percussion pick. If your mine is in need of such a vehicle contact our sales department.



# CORRECTION

FILE PATH NAME: G\ELECTRICAL\ESW-27A

**NOTE:** SWITCH ASSEMBLY DOES NOT INCLUDE PACKING GLANDS. ORDER GLANDS SEPERATELY. SPECIFY CABLE AND CONDUIT WHEN ORDERING PARTS.



INDEX #	DESCRIPTION	PART #	INDEX #	DESCRIPTION	PART #
1	ENCLOSURE HOUSING	47736	5	OPERATING SHAFT	49554
2	COVER HOUSING	50400	6	BUSHING	24568
3	CONTROL HANDLE	49553	7	<b>SWITCH</b>	<b>49520</b>
4	1/8" DIA ROLL PIN	35580	8	3/8"-16 x 1" BOLT W/LOCKWASHER	
<b>SHEET NO.</b> ESW-27A	<b>TITLE</b> 34547 HEADLIGHT SWITCH ASSEMBLY		<b>DATE</b> 9-17-98	<b>R</b>	<b>J. H. FLETCHER &amp; CO.</b> 402 HIGH STREET HUNTINGTON, W.VA.

Some J. H. Fletcher & Co. parts books may contain a typographical error. Please check Sheet Number ESW-27A, titled 34547 Headlight Switch Assembly. Item number 7 is a switch with part number 49250. This part number is incorrect and should be 49520. Please make this change to your parts book if it is incorrect. If you would prefer to have a replacement sheet contact the parts book department at 304-525-7811. We apologize for any inconvenience this may have caused.

## Never Assume Everything Is Safe

As of October 9, 1999 there were 29 fatalities in the coal industry. Eight of those 29 were from roof falls and 6 were from rib, face, pillar, or highwall falls.

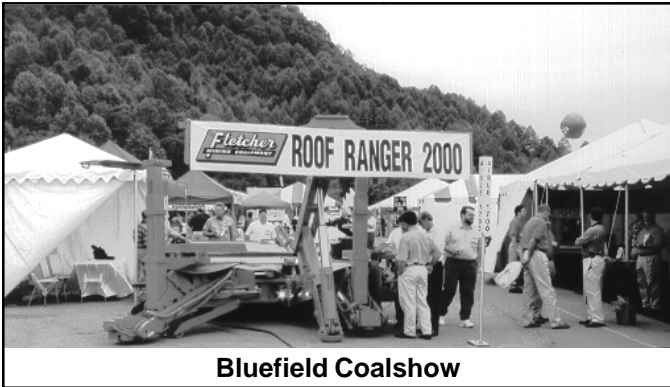
It is important to know your mining plan but also keep in mind that the mining plan outlines the minimum requirements for roof support. Learn to recognize areas in need of additional roof support or areas that need scaling. Always make a visual as well as a sounding test before entering a work area.

Never assume that someone else has checked the area for hazards, take it upon yourself to see that the area is safe.

Finally, stay alert. When people get tired or distracted they can let down their guard. Even though there may have been no accidents for months the risk of a roof fall accident always exists.

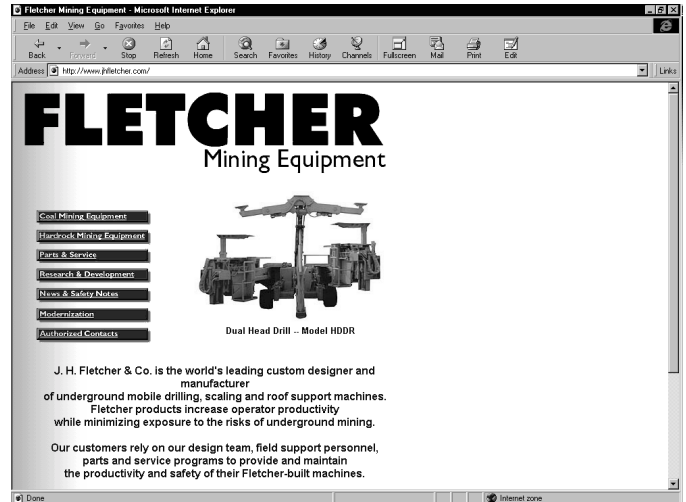
*(Statistics found at www.msha.gov)*

# Coal Shows



**Bluefield Coalshow**

We would like to thank everyone who took the time to stop by our display at the various coal shows we attended this past year. We hope you learned something new about J. H. Fletcher & Co. or were able to get some information that could help your mine be more productive. As always, feel free to contact the Fletcher sales department to see how they can meet your roof support needs.



Take a look at J. H. Fletcher & Co. on the world wide web. Go to [www.jhfletcher.com](http://www.jhfletcher.com) and find out information on our product line and who to contact. Soon, we hope to be offering the Fletcher Product Newsletter on-line. You can also email Fletcher by writing to [jhf@jhfletcher.com](mailto:jhf@jhfletcher.com).

Although the information and recommendations contained in this publication have been compiled from sources believed to be reliable, J. H. Fletcher & Co. makes no guarantee as to, and assumes no responsibility for, the correctness, sufficiency or completeness of such information or recommendations. Other or additional safety measures may be required under particular circumstances. Information in this publication may not be reproduced without permission from the Risk Management Department.

**Published by J. H. Fletcher & Co.  
Box 2187  
Huntington, WV 25722-2187**

Currently we are only sending the Fletcher Newsletter to a selective readership. If you know of someone in your company who wishes to be placed on our mailing, please let us know. Below is a form for a free subscription to the newsletter. Just fill out the form and return it to J. H. Fletcher & Co., Risk Management, Box 2187, Huntington WV 25722-2187.

### FREE SUBSCRIPTION FORM

Name \_\_\_\_\_ Job Title \_\_\_\_\_  
 Company \_\_\_\_\_ Address \_\_\_\_\_  
 City \_\_\_\_\_ State \_\_\_\_\_ Zip \_\_\_\_\_  
 Phone \_\_\_\_\_

**J. H. Fletcher & Co.**  
 Box 2187  
 Huntington, WV 25722-2187  
 (304) 525-7811