



Inside

Page 2

*Fletcher DDR
Walk-Thru Bolter*

*Scissor ATRS
Rocker Pads*

Page 3

*Starter Box
Visual Inspection*

Safety Poster

Page 4

Employee News

*Universal
Warning*

J. Robert Fletcher Inducted into WV Coal Hall of Fame



In May 2011, the late J. Robert (Bob) Fletcher was inducted into the West Virginia Coal Hall of Fame. Mr. Fletcher's grandson, Rod Duncan, received the honor for him and shared some of Bob Fletcher's personality, accomplishments, and philosophies.

Bob Fletcher always saw achievements of the company as a group effort and was quick to praise others for these successes. Over the decades the company was responsible for many improvements to the safety and productivity of the underground mining industry in West Virginia.

Safety was always his first concern and he instilled that in everyone at the company. His grandson remembers Bob telling him, "We don't have 175 employees; we have 175 families depending on us." That approach not only applied to his workforce, but also to the miners using Fletcher equipment. His first concern was to build the safest machine possible so the operator could minimize his risk, while maximizing his productivity. One of the best examples of this occurred in 1971, when J.H. Fletcher & Co. patented the first Temporary Roof Support system. Bob decided not to enforce the patent, because it improved safety for the miner.

Throughout his 70 years in the mining industry, he never stopped pushing the development of safer and more productive equipment. He always challenged his engineering staff to push the envelope to meet or exceed the needs of the customer and the industry.

He remained heavily involved in the company as Chairman of the Board after he retired in 1980. He never stopped striving to make the company and its people better. Several of the Fletcher family remember receiving phone calls once or twice a week with questions about production and sales, or an idea that he wanted us to consider. Of course, he would always present it in such a way that it became our idea.

Bob Fletcher's passion for the mining industry, its people and its vital role in improving the world's energy structure will continue to live on. His challenge to keep designing and producing the most advanced roof control equipment in the world remains the mantra of the company today.

A line in Bob Fletcher's diary refers specifically to his family and employees, but also applies to the people in the mining industry that he spent his life working with. It simply reads, "I have had a wonderful life and thank each of you for your part in it." (*article adapted from speech by Rod Duncan*)

Fletcher DDR Walk-Thru Roof Bolter



J. H. Fletcher & Co. custom builds machines to optimize safety and productivity in customer specified conditions and requirements.

Fletcher engineers were met with the challenge of designing a roof bolter that can work in low seam height while also protecting the operators from hazardous rib conditions. The result was the DDR Walk-Thru Roof Bolter.

The DDR is a dual head, mast feed drill that allows both vertical and angle drilling in low to medium seams. The 36 inch chassis design eliminates the need for operators to walk in the sometimes dangerous area between the machine and the rib. Instead, they can walk or, in low conditions crawl, up the center of the chassis protected

from potentially hazardous rib. In addition, the controls are located inside the booms, reducing the operator's risk of injury from rib falls.

Additional features include 18 ft. straight line boom swing for a 4 bolt pattern on 4 ft. centers and up to 90° mast tilt for truss and rib bolting.

Contact your Fletcher sales rep today to see if the Fletcher DDR is the right machine for your roof control needs.



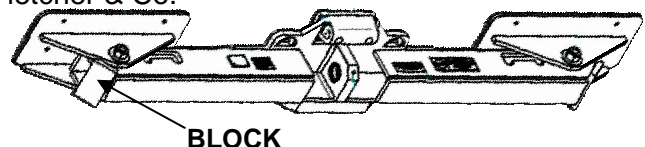
Scissor ATRS Rocker Pads

It was brought to our attention that a scissor ATRS rocker pad was flipping over the end of the beam. When the rocker pad flips beyond the end of the beam, several undesirable outcomes are possible. One problem is the beam rocker pads will not make proper contact with the roof. A second, and more serious problem, is the operator will be tempted to leave the protection of the drill canopy to manually place the rocker into the proper position which will expose him to dangers of falling roof material.

The original design is a round bar that is welded to the rocker pad and, by being under the beam structure, keeps the rocker pad from flipping over the end of the beam. In low coal especially, this round bar can be damaged and even torn off. If your machine has this type of ATRS beam with the round bar welded to the rocker pad, please check your machine to insure the round bar is in good shape and doing the job it was intended to do.

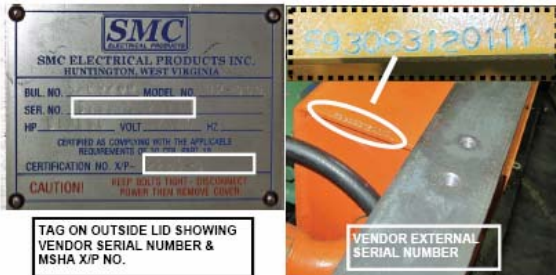
If you are having problems maintaining the round bar on your machine, we have an upgrade kit available that will provide an improved method of preventing the rocker pad from flipping over the end of the beam. The improvement is to weld a block of steel on each end of the ATRS beam tube. This welded-on block will be more rugged and less likely to be damaged in low coal conditions.

We are providing this upgrade kit free of charge. If you are interested in making this change to your scissors ATRS, please contact your Fletcher Sales or Service Representative. Please don't attempt to modify your ATRS beam or rocker pad on your own. This is part of a MSHA certified system and cannot be modified or repaired without approval from J. H. Fletcher & Co.



Starter Box Visual Inspection

Numerous visual checks to a machine's starter box enclosure and lid can be performed by qualified personnel when the starter box lid is removed or when the required permissibility inspection is performed. The outside enclosure lid has an attached MSHA certification tag which contains the vendor serial number and an MSHA certification



TAG ON OUTSIDE LID SHOWING VENDOR SERIAL NUMBER & MSHA X/P NO.

VENDOR EXTERNAL SERIAL NUMBER

number (X/P Number). Also, the enclosure serial number is embossed on the outside top left edge of the enclosure panel and on the inside of the lid. If a new starter box lid is ordered for replacement, the starter box serial number must be supplied so that the MSHA certification plate on the new lid will match the starter box serial number.

The parallel mating surfaces of the starter enclosure rim bar and the enclosure lid form the

flame arresting path after the lid bolts are tightened to proper torque specifications of 50 LBf-FT. A 0.004" feeler gauge *should not fit* between the two. Use

only approved bolts, washers, and lock washers.

The starter box cover bolts must be installed using a flat washer (flat washer against the cover box lid) and a lock washer (SEE MACHINE PARTS BOOK FOR CORRECT PART NUMBERS).

With the cover enclosure removed, several internal checks can be done. Check the breaker handle for proper operation. Next the cover mounting bolt holes must not be out of round (egg shaped). The rim bar width must be a minimum of 1" and the surface smooth without damage from dents or scratches and be free of rust, corrosion and pitting.



VENDOR SERIAL NUMBER EMBOSSED ON INSIDE OF LID



CHECK BREAKER HANDLE FOR PROPER OPERATION



0.004" FEELER GAUGE

Safety Poster

Safety posters play an important role in effective safety communications. They can warn miners about specific hazards that accompany their jobs.

A new machine safety poster, addressing tripping and slipping hazards, is now available, free of charge, from J. H. Fletcher & Co. This is an 11x17 poster and can be ordered by calling Kim Casey in the Fletcher Risk Management Department. Place your order for the poster by the part number 513510, state the quantity you need and your mailing address. In most cases the posters will be shipped in one week.

A variety of other posters are available and can be seen at www.jhfletcher.com. These are provided at no charge. Be sure to check back often to see additional items.



Employee News

Fletcher Universal Warning



David Boggs

Fletcher would like to introduce and welcome David Boggs. David, who resides in South Point, OH, started in the Parts Book department as an Engineering Tech at the beginning of January, 2011. David graduated from West Virginia Institute of Technology in 1986 with an A.S. in Drafting and Design Engineering degree, and has worked in the drafting discipline for 25+ years in the construction industry. He is currently enrolled in his second year of the Engineering program at Marshall University with plans to obtain a B.S. in Mechanical Engineering.

Information on job opportunities and how to apply can be found on our website: www.jhfletcher.com
(AA/EEO Employer)



This is the new Fletcher Universal warning sign. Whenever you see this sign in any of the Fletcher videos, manuals, training materials, website, or any other Fletcher documents, Fletcher is reminding you to STOP, LOOK and LISTEN. Failure to use safe operating practices at ALL times can and will result in serious injury or death to you or to others.

J. H. Fletcher & Co. on the Web:
www.jhfletcher.com
Now Available On Line:
Literature, Newsletters, Bulletins, Published Papers

The information contained in this newsletter has been obtained from sources believed to be reliable, and the editors have exercised reasonable care to assure its accuracy. However, J. H. Fletcher & Co. does not guarantee that contents of this publication are correct and statements attributed to other sources do not necessarily reflect the opinion or position of J. H. Fletcher & Co.

Published by J. H. Fletcher & Co.
Box 2187
Huntington, WV 25722-2187
© 2011

Currently we are only sending the Fletcher Newsletter to a select readership. If you know of someone in your company who wishes to be placed on our mailing, please let us know. Below is a form for a free subscription to the newsletter. Just fill out the form and return it to J. H. Fletcher & Co., Risk Management, Box 2187, Huntington WV 25722-2187.

FREE SUBSCRIPTION FORM

Name _____ Job Title _____
Company _____ Address _____
City _____ State _____ Zip _____
Phone _____

J. H. Fletcher & Co.
Box 2187
Huntington, WV 25722-2187
(304) 525-7811