



### Inside

Page 2

Important  
Safety  
Notice

Page 3

Cable Reel  
Valve Update

Parts Book  
Correction

Page 4

Drillguide  
Guard Kit

Subscription  
Form

## Strip Switch Panic Bar

### *Troubleshooting and Repairing the System*

All roof bolters manufactured by J. H. Fletcher & Co. are equipped with a circuit allowing the operator to quickly shut down the machine in an emergency. This circuit is called the strip switch panic bar circuit.

Since the panic bar often provides the ultimate defense against serious injury or death during an emergency, it is essential that the panic bar system function correctly. If a problem appears in the panic bar system at any time, the machine must be taken out of service until the problem has been corrected.

To assist with the troubleshooting and repair of the strip switch panic bar circuit J. H. Fletcher & Co. has developed an instructional package. This package consists of a troubleshooting flow chart and a video providing the information required to safely and efficiently troubleshoot and make repairs to the Fletcher strip switch panic bar system.

If you are interested in this package and would like a copy contact our service department at (304) 525-7811 and order part number 139018.

*Only properly trained and authorized personnel should attempt to troubleshoot or repair the electrical system. Personnel engaging in this activity must meet all state and federal requirements.*



# J. H. Fletcher & Co.

# Important Safety Notice

TO: ALL Owners, Operator's, and Rebuilders of J. H. Fletcher & Co.  
 RRII/DDO Roof Bolting Equipment

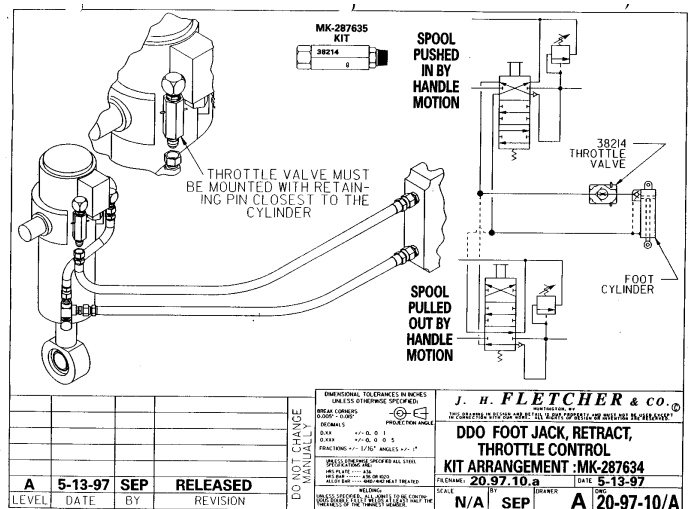
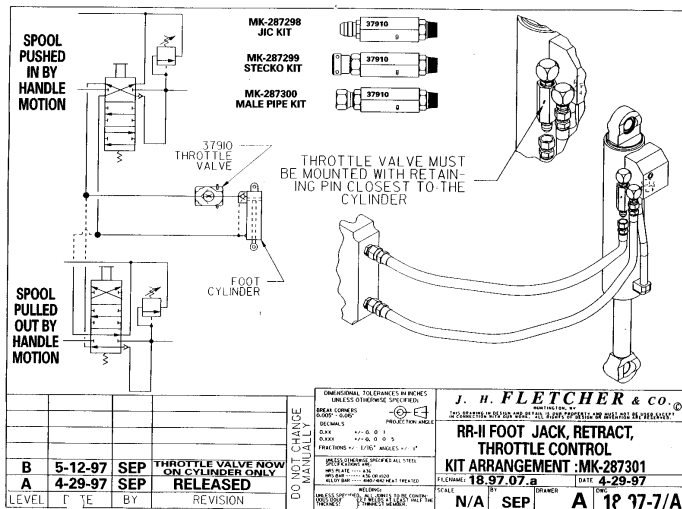
Subj.: Retrofit - Pressure setting on RRII/DDO

J.H. Fletcher & Co. has been informed of three accidents that occurred on RRII roof bolters when the boom dropped rapidly resulting in the driller's canopy striking the operator on the head, neck or back

The major contributing factor when accidents such as these occur is that the foot jack pressure is set to high, allowing the foot to lift the front end of the machine. When the foot jack is retracted, the boom and canopy may drop rapidly potentially causing the canopy to strike the operator on the head, neck and back.

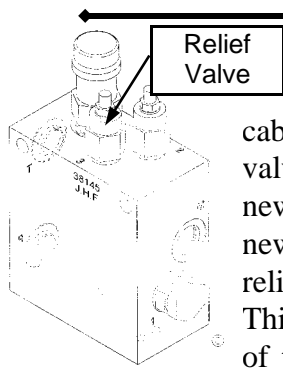
When investigating these accidents it was found that the pressure in the foot jack circuit had been altered from the 500-700 psi setting specified by Fletcher. The alterations take place when the foot jack control valve is replaced or repaired and the correct relief valve and specified pressure setting are not maintained or the relief valve has been readjusted from the original OEM specified pressure.

To prevent this situation from occurring again J.H. Fletcher & Co. is notifying and recommending specific steps be taken in INFORMATION BULLETIN NO. 67. If you have a RRII/DDO which are the machine that are affected by the retrofit and have still not received this bulletin we request that you call J.H. Fletcher & Co. Risk Management Department today for a complete copy of this bulletin.



The full version of the above Safety Notice was sent out by the Fletcher Risk Management Department during the month of May, 1997. If you own or operate a RRII or DDO and have not received this notice, we encourage you to contact the Fletcher Risk Manager.

## CABLE REEL VALVE UPDATE



Over the last year J.H. Fletcher & Co. has changed its cable reel valve. The original valve was part number 37811 the new part number is 38145. The new cable reel valve incorporates a relief as a brake in the valve body. This will prevent any backlashing of the cable, while the operator is

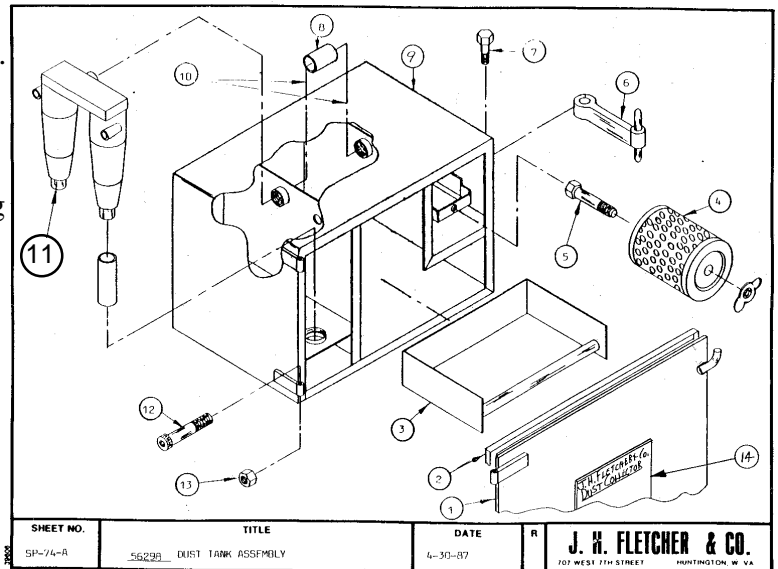
using the cable reel function.

If you order the old part number today from our service department you will receive the new part number in a kit (part number 38225). Remember, when you get the new part you will not need the sequence valve in the circuit because it is incorporated into the new valve assembly.

If you have any questions, please call J.H. Fletcher & Co. and ask for Steve Payne or Tim Blevins.

## Parts Book Correction

The dust tanks on your Fletcher roof bolting machines are manufactured by J. H. Fletcher & Co. The dust tank assembly drawing is found in your parts book and is labeled as drawing SP-74-A. It has come to our attention that prior to April 1997 the cyclone identified as number 11 on the drawing was incorrectly identified on the parts sheet as part number 56231. The correct part number should be 56272. Please make the appropriate correction in your parts book or call the Parts Book department for the correct parts sheet. We apologize for this error and any problems this may have caused. If you have any questions regarding the dust collection system, please contact Ben Pack at J. H. Fletcher & Co. (304) 525-7811.



SHEET NO.	TITLE	DATE	R	J. H. FLETCHER & CO.
SP-74-A	56298 DUST TANK ASSEMBLY	4-30-87		707 WEST 7TH STREET HUNTINGTON, W. VA.
ITEM	PART NO.	DESCRIPTION	NO. REQ'D	
1.	198314	DOOR ASSEMBLY	1	
2.	198315	DOOR GASKET ASSEMBLY	1	
3.	188586	DRAWER ASSEMBLY	1	
4.	46861	FILTER ASSEMBLY w/WINGNUT	1	
5.		3/8"-16 x 5 1/2" Lg. (PART OF WELDMENT)	1	
6.	51436	LATCH	2	
7.	34361	5/16"-18 x 2 1/2" Lg. w/NYLOCK NUT	2	
8.	56263	2" ID. DUST HOSE	1	
9.	56234	DUST TANK WELDMENT	1	
10.	19809	HOSE CLAMP	2	
11.	56272	CYCLONE ASSEMBLY	1	
12.	130064	7/16"-20 x 3" Lg. H.H.C.S.	2	
13.	21016	7/16"-20 HEX NYLOCK NUT	2	
14.	159520	DUST COLLECTOR TAG (SEE SHEET W5-271)	1	

## Drillguide Guard Kit

The purpose of the hydraulic drillguide on Fletcher mast style roof bolters is to provide stability of the drill steel during drilling and to retrieve the drill steel from the drilled hole. This eliminates the need for the operator to hold onto a rotating drillsteel, wrench or bolt.

In an effort to prevent an operator from inadvertently putting his hand in the area of the drill guide jaws, Fletcher provides two different hydraulic drill guide guards. The standard guard (Figure 1) uses hydraulic hoses positioned in front of the hydraulic drill guide jaw area. This guard allows sufficient clearance for a 6" x 6" roof bolt plate to pass through the drill guide with the jaws open. If this feature is not required, i.e. header boards or oversized plates are being utilized, then the alternative drill guide guard (See Figure 2) should be considered. The alternative guard is designed to reduce operator exposure to the hydraulic drill guide jaws from the top as well as the front.

This guard is not a substitute for the orifice in the drillguide cylinder that restricts the closing speed of the drillguide jaws without using a flow control valve. Make sure the orificed cylinder is in place on all hydraulic drillguides.

If you would like more information contact your Fletcher representative or call our service department.

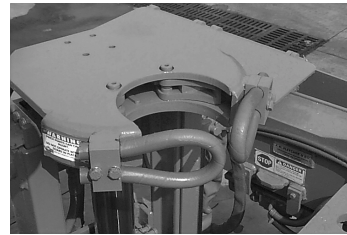


Figure 1

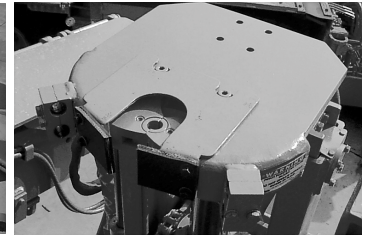


Figure 2

Part Number 236372

The information contained in this newsletter has been obtained from sources believed to be reliable, and the editors have exercised reasonable care to assure its accuracy. However, J. H. Fletcher & Co. does not guarantee that contents of this publication are correct and statements attributed to other sources do not necessarily reflect the opinion or position of J. H. Fletcher & Co.

Published by J. H. Fletcher & Co.  
Box 2187  
Huntington, WV 25722-2187

Currently we are only sending the Fletcher Newsletter to a selective readership. **Please post this newsletter in a convenient location for others in your company to read or pass it on to those who may not be receiving the newsletter.** Below is a form for a free subscription to the newsletter. Just fill out the form and return it to J. H. Fletcher & Co., Risk Management, Box 2187, Huntington WV 25722-2187.

### FREE SUBSCRIPTION FORM

Name \_\_\_\_\_ Job Title \_\_\_\_\_  
Company \_\_\_\_\_ Address \_\_\_\_\_  
City \_\_\_\_\_ State \_\_\_\_\_ Zip \_\_\_\_\_  
Phone \_\_\_\_\_

J. H. Fletcher & Co.

## J. H. Fletcher & Co.

Box 2187

Huntington, WV 25722-2187

(304) 525-7811