

J. H. FLETCHER & CO. Box 2187 – Huntington, WV 25722-2187 – 304/525-7811 – FAX 304/525-4025

IMPORTANT SAFETY NOTICE

INFORMATION BULLETIN NO. 112

TO: CUSTOMERS WITH CHASSIS LIFT KITS FOR REMANUFACTURED ROOF BOLTERS ONLY

**FROM: J.H. FLETCHER & CO.
RISK MANAGEMENT DEPARTMENT**

DATE: MARCH 2009

SUBJECT: TRAM CHAIN GUARD

On May 29, 2008, a roof bolter operator was injured at a mine in West Virginia. Information obtained by J.H. Fletcher & Co. (Fletcher) indicates that the roof bolter operator was injured by a broken tram chain while using the position control valve. The tram chain broke and caused a link pin to come out and strike the operator in the leg. The roof bolter he was operating when injured was a Fletcher bolter that had been remanufactured; the axle was relocated lower on the chassis, exposing more drive chain.

Although, this accident is still under investigation and the cause of the chain breakage is undetermined, Fletcher is publishing this bulletin to inform owners and operators that a chain guard must be present on specific machines with the same type of chassis lift kit installed (see Attachment 1). Even though Fletcher has no prior knowledge of tram chains breaking, and operators being injured by a flying link pin, the use of a chain guard is still required.

This particular chassis lift kit allows the ground clearance of the machine to be increased by adding axle tubes below the bottom plate of the chassis. Longer tram chains are connected to the sprockets. This modification of the machine results in more exposed drive chain. The standard tram chain guard no longer provides coverage of the tram chains when the chassis lift kit is installed. The chassis lift kit requires a tram chain guard kit, Part No. 418523 for RRII-Style Chassis, or Part no. 418521 for DDO-Style Chassis. The kit includes four guards, instructions for installation and all the mounting hardware necessary. Note; welding of tapped mounting bosses is necessary.

In order to prevent the possibility of any future injuries of this nature, Fletcher is providing every machine owner who has had a machine retrofitted with a Fletcher chassis lift kit a tram chain guard kit **FREE OF CHARGE.**

The advantages of installing the tram chain guard kit include:

1. The chain guard protects the operator from a flying link pin, or other broken tram chain part, if a failure to the chain should happen.
2. The chain guard prevents personnel from placing any body part in a dangerous position when the chain is moving.
3. The chain guard reduces the accumulation of dirt and mud on the chain.

THIS BULLETIN IS ONLY FOR THOSE CUSTOMERS WHO OWN A MACHINE THAT IS IDENTIFIED IN THIS BULLETIN (see Attachment 1). If you own one of the machines specified in this bulletin, you should call the Fletcher Service Department immediately. To obtain the **FREE** chain guard kit, you will be required to provide the name of your company and the mine where your machine is located, the mailing address where the kit should be sent and the serial number of the machine upon which the chain guards will be attached. Keep in mind that all four tram chains will need to be guarded as shown in Attachment 2. When you have identified your machine from the list in Attachment 1 and provided the required information, Fletcher will send one complete tram chain guard kit per machine. Fletcher strongly recommends that this retrofit be completed as soon as possible on all machines identified by serial number in this bulletin.

Fletcher also recommends that you meet with your maintenance personnel to review the service manual for instructions as to how a chain should be disassembled during towing and remind the operators that this chain guard should always be present (assuming your machine is not outfitted with a towing package). Second, make sure you are getting the correct chain for the application. Review your parts manual for the correct Fletcher OEM part number of the chain you are replacing. Failure to replace the chain properly, and with OEM parts, could lead to premature chain failure and cause the machine to experience down time. The chains are an integral part of the machine braking systems and must be maintained in good working order. Additional information on the care and use of chains will also be provided with your order for the guard kit and is available for all customers on our web site.

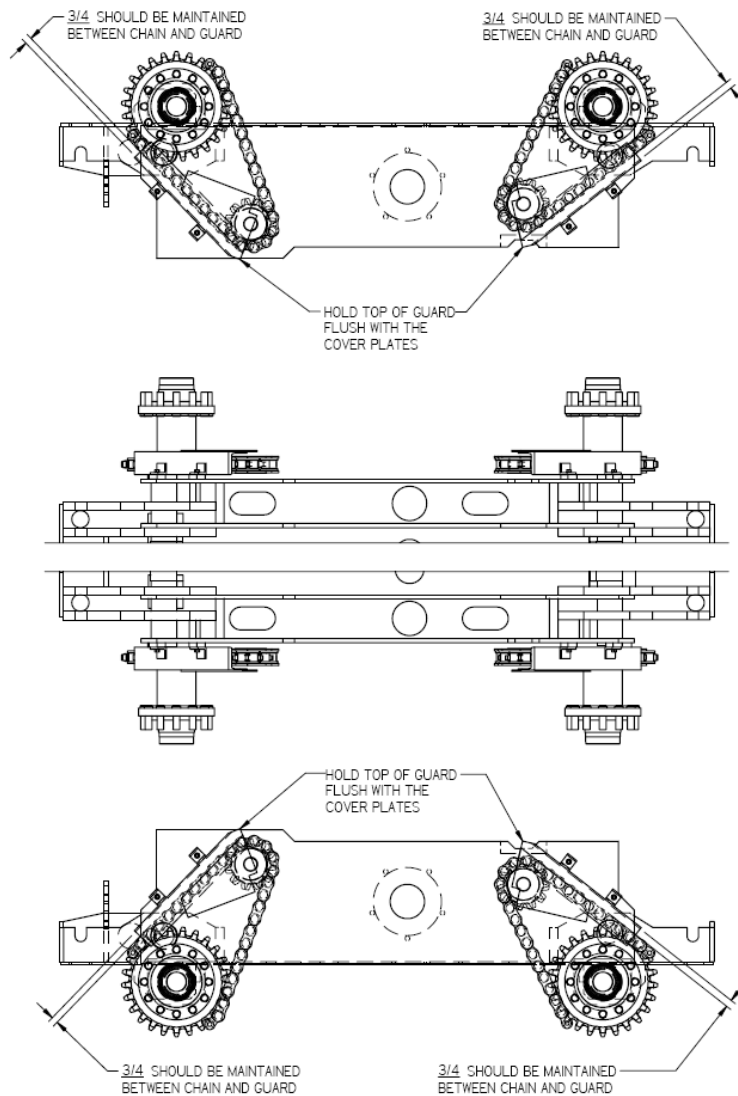
If you have sold, scrapped or otherwise disposed of a machine listed in this Information Bulletin, we request that you provide us the name and address of the current owner.

J.H. Fletcher & Co. appreciates your cooperation with this retrofit and encourages you to educate maintenance and production personnel regarding the need to maintain this chain guard and the need to inspect the tram chain regularly.

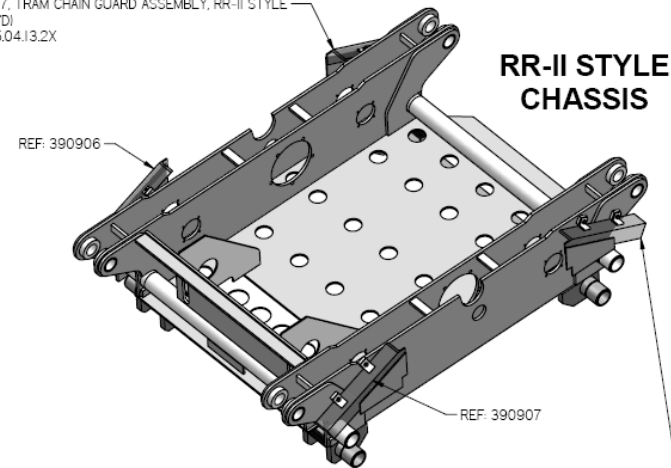
If you have questions, please do not hesitate to call David Cooper (304) 525-7811, dcooper@jhletcher.com

MACHINE LIST FOR INFORMATION BULLETIN 112

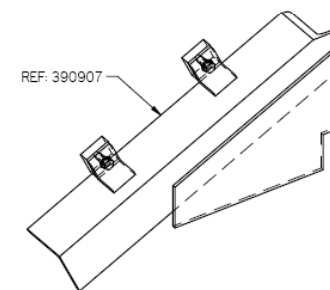
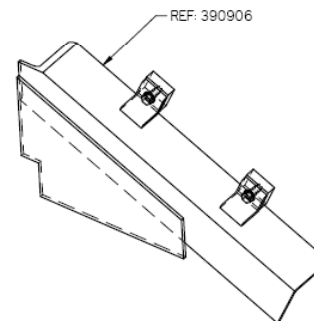
MACHINE SERIAL NUMBER	ORIGINAL MACHINE SERIAL NUMBER
2001023	
2004430	2001331, 96376, 92018
2004049	2001223, 89053
2004050	
2004052	
2004053	
2004314	94047
2004324	83041
2005041	
2005126	
2005325	95059
2005356	97363, 87043
2005408	2002308, 94039
91011	
83071	
2008309	2003347, 2000327, 99320, 94311, 86042
2005334	94059
2005335	93009
2006471	98331, 85056
2008354	96310, 84042
93314	76113
87018	
2008324	98044
2008355	2001347, 96035



390907, TRAM CHAIN GUARD ASSEMBLY, RR-II STYLE
(2-RE0D)
DWG:45.04.13.2X



390906, TRAM CHAIN GUARD ASSEMBLY, RR-II STYLE
(2-RE0D)
DWG:45.04.13.2X



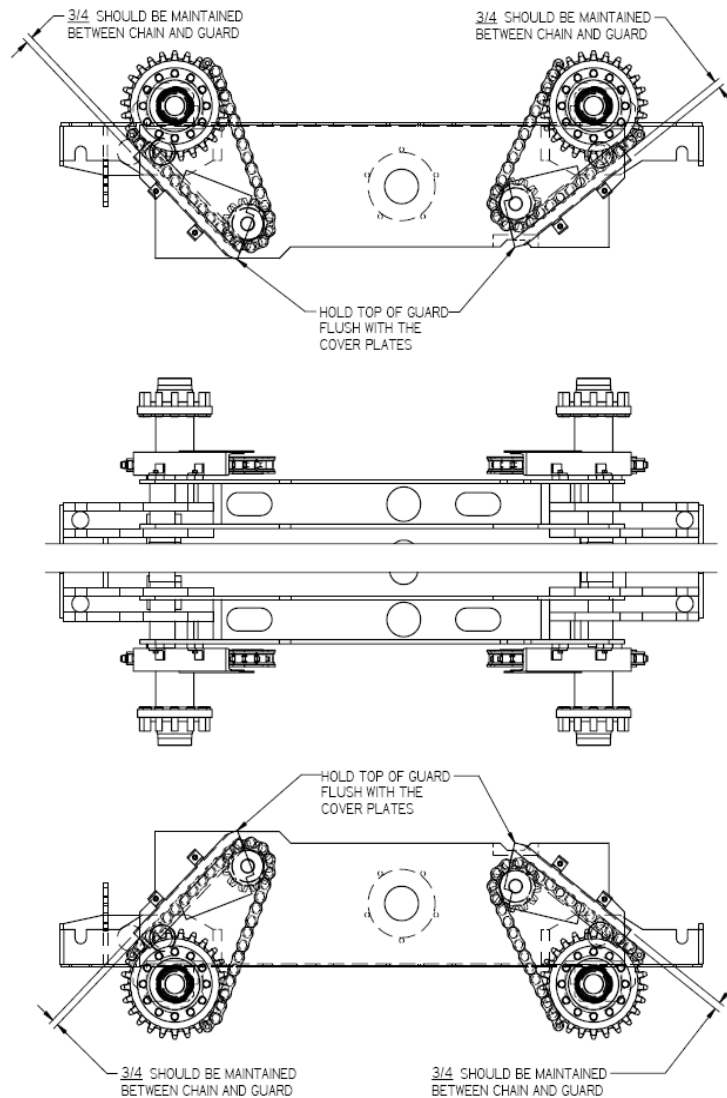
NOTE: FOR DDO-STYLE CHASSIS SEE DWG. 418521

DIMENSIONS AND TOLERANCES IN INCHES UNLESS OTHERWISE SPECIFIED:			
F			DECIMALS
E			0.001" - 0.015"
D			0.001" - 0.015"
C			0.001" - 0.015"
B			0.001" - 0.015"
A	02/23/09	SEP	RELEASED
UNLESS OTHERWISE SPECIFIED ALL STEEL			
SPECIFICATIONS ARE:			
HRS PLATE -- A36			
HRS BAR -- A36 OR 1020			
ALLOY BAR -- 4140H142 HEAT TREATED			
WELDING STANDARDS:			
SEE 389370 DOCUMENT ON JHF WELDING			
STANDARDS AND SPECIFICATIONS WELD			
SYMBOLS OR NOTES ON DRAWING SUPERCEDE			
389370 DOCUMENT			
DO NOT CHANGE MANUALLY		UNLESS OTHERWISE SPECIFIED	
ALL HOLES ARE TO BE BURNED		ALL HOLES ARE TO BE BURNED	
MATERIAL FOR MACHINES WITH LIFT KITS		SHPG. WT. 91.9 lbm	

J. H. FLETCHER & CO. ©
THIS DRAWING IN DESIGN AND DETAIL IS OUR PROPERTY AND MUST NOT BE USED EXCEPT IN CONNECTION WITH OUR WORK. ALL RIGHTS OF DESIGN OR INVENTION ARE RESERVED.

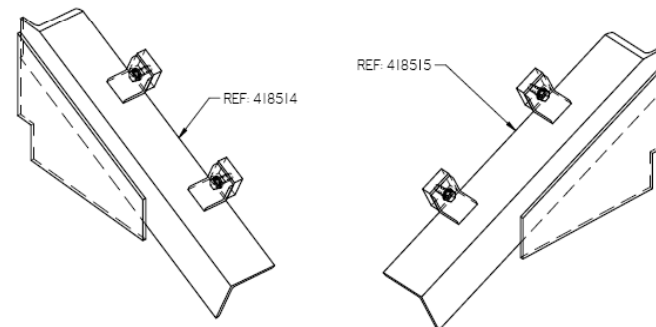
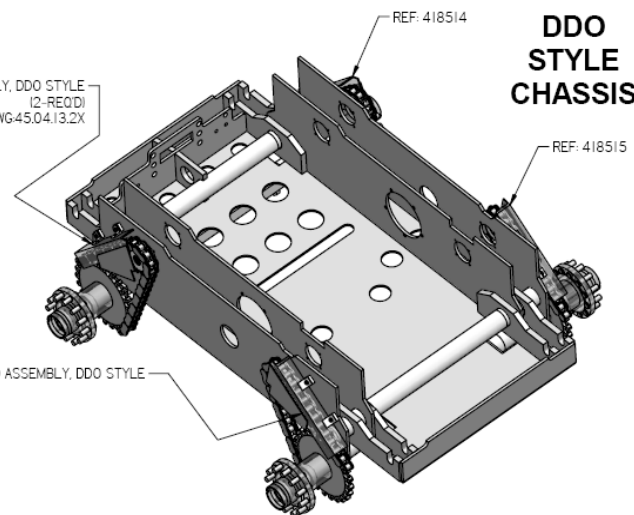
TRAM CHAIN GUARD INSTALLATION KIT
for RR-II STYLE CHASSIS with LIFT KITS

FILENAME	418523.2Xdft	MODEL FILE	418523.dgn
BY	SEP	SHEET	1 OF 1
DWG	418523.2X	REV	A



418515, TRAM CHAIN GUARD ASSEMBLY, DDO STYLE
(2-REQ'D)
DWG:45.04.13.2X

418514, TRAM CHAIN GUARD ASSEMBLY, DDO STYLE
(2-REQ'D)
DWG:45.04.13.2X



NOTE: FOR RR-II-STYLE CHASSIS SEE DWG. 418523

<table border="1"> <tr><td>F</td><td></td><td></td><td></td></tr> <tr><td>E</td><td></td><td></td><td></td></tr> <tr><td>D</td><td></td><td></td><td></td></tr> <tr><td>C</td><td></td><td></td><td></td></tr> <tr><td>B</td><td></td><td></td><td></td></tr> <tr><td>A</td><td>02/23/09</td><td>SEP</td><td>RELEASED</td></tr> </table>				F				E				D				C				B				A	02/23/09	SEP	RELEASED	DIMENSIONS AND TOLERANCES IN INCHES UNLESS OTHERWISE SPECIFIED: BREAK CORNERS 0.205" - 0.015" DECIMALS 0.X ±.03 0.XX ±.021 FRACTIONS 1/16" ±.005 3/32XX ±.005 ANGLES ±1 DEGREE UNLESS OTHERWISE SPECIFIED ALL STEEL SPECIFICATIONS ARE: HR5 PLATE --- A36 HR5 BAR --- A53 OR 1020 ALLOY BAR --- 4140/4142 HEAT TREATED		J. H. FLETCHER & CO. © THIS DRAWING IN DESIGN AND DETAIL IS OUR PROPERTY AND MUST NOT BE USED EXCEPT IN CONNECTION WITH OUR WORK. ALL RIGHTS OF DESIGN OR INVENTION ARE RESERVED. TRAM CHAIN GUARD INSTALLATION KIT for DDO-STYLE CHASSIS with LIFT KITS	
F																															
E																															
D																															
C																															
B																															
A	02/23/09	SEP	RELEASED																												
DO NOT CHANGE MANUALLY UNLESS OTHER WISE SPECIFIED ALL HOLES ARE TO BE BURNED MATL FOR MACHINES WITH LIFT KITS SHPG. WT. 91.9 lbm				WELDING STANDARDS: SEE 35370 DOCUMENT ON JHF WELDING STANDARDS AND SPECIFICATIONS. WELD SYMBOLS OR NOTES ON DRAWING SUPERCEDE 35370 DOCUMENT		FILENAME 418521.2Xdrt MODEL FILE 418521.dsm BY SEP SHEET 1 OF 1 DWG 418521.2X REV A																									